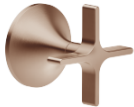


VAIA Wall valve clockwise closing 1/2" - Brushed Bronze
VAIA

36 607 809

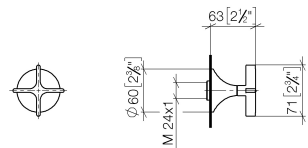


- rosette Ø 60 mm
- head part with cut-to-length spindle and sleeve
- WRAS

	Brushed Bronze	36 607 809-42
	Chrome	36 607 809-00
	Brushed Platinum	36 607 809-06
	Platinum	36 607 809-08
	Dark Chrome	36 607 809-19
	Brushed Durabrass (23kt Gold)	36 607 809-28
	Brushed Champagne (22kt Gold)	36 607 809-46
	Champagne (22kt Gold)	36 607 809-47
	Brushed Dark Platinum	36 607 809-99

36 607 809

mm [inches]



Codes & Standards

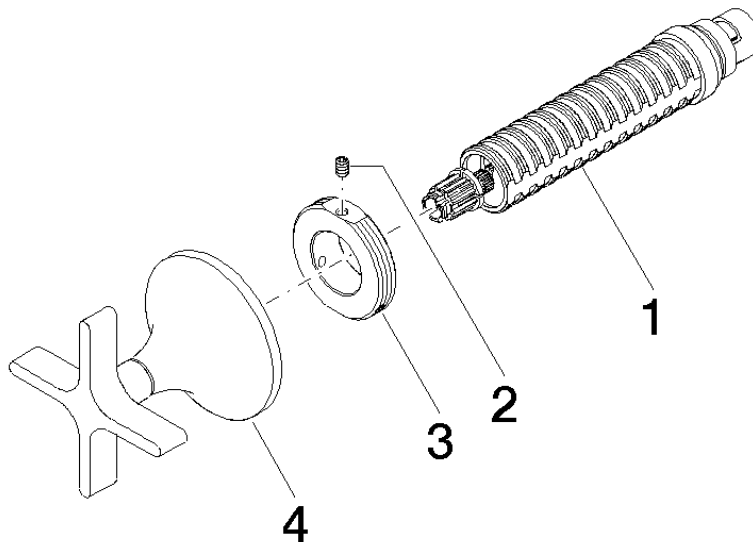
ASME A112.18.1	cUPC	DIN 4109	EN 1111
ISO 3822	Scottish Water Byelaws	UK Water Supply Regulations	Ü-Zeichen

Certificates and sustainability

WRAS_2011	LGA_29	WRAS_2010	DVGW_DW-6512DN0	IAPMO_4976 (
-----------	--------	-----------	-----------------	--------------

36 607 809

Parts for other
finishes can be found
here: [Chrome](#)



Spare parts list

No.	Item Number	Name	Quantity used	Delivery time
3	09 21 02 163 90	disc	1.00	2
4	90 20 80 014 00-42	handle	1.00	30
1	90 90 03 143 00 90	top	1.00	2
2	09 31 11 008 90	pin	1.00	2