

VAIA Wall valve clockwise closing 1/2" - Brushed Dark Platinum

VAIA

36 607 819



- rosette Ø 60 mm
- head part with cut-to-length spindle and sleeve
- WRAS 2011026, 2010066

| | | |
|--|--------------------------------|---------------|
|  | Brushed Dark Platinum | 36 607 819-99 |
|  | Chrome | 36 607 819-00 |
|  | Brushed Platinum | 36 607 819-06 |
|  | Platinum | 36 607 819-08 |
|  | Dark Chrome | 36 607 819-19 |
|  | Brushed Durabronze (23kt Gold) | 36 607 819-28 |
|  | Brushed Bronze | 36 607 819-42 |
|  | Brushed Champagne (22kt Gold) | 36 607 819-46 |
|  | Champagne (22kt Gold) | 36 607 819-47 |

Required miscellaneous



- Wall valve 1/2" -** 35 607 970 90
- max. recess depth 145 mm
 - min. recess depth 75 mm

36 607 819

mm [inches]



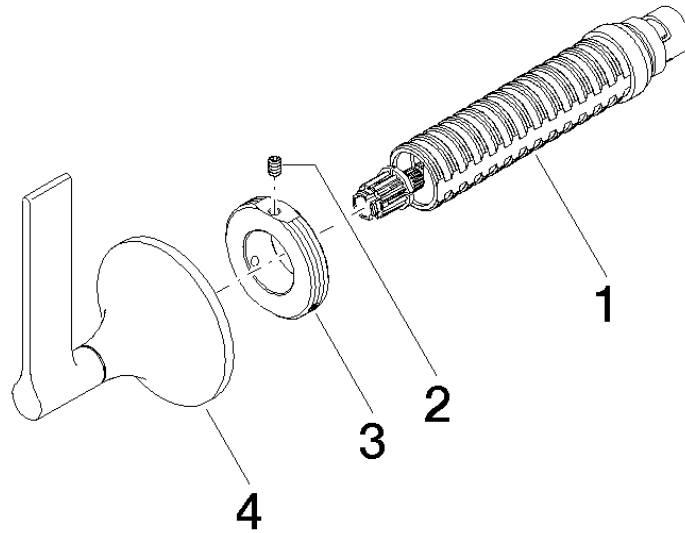
Codes & Standards

| | | | |
|----------------|----------|------------------------|-----------------------------|
| ASME A112.18.1 | cUPC | DIN 4109 | EN 1111 |
| EN 200 | ISO 3822 | Scottish Water Byelaws | UK Water Supply Regulations |

Ü-Zeichen

Certificates

| | | | | |
|-----------------|-----------------|-----------|--------|--------|
| IAPMO_4976 | DVGW_DW-6501DN0 | WRAS_2010 | LGA_29 | LGA_29 |
| DVGW_DW-6512DN0 | WRAS_2011 | | | |





VAIA Wall valve clockwise closing 1/2" - Brushed Dark Platinum

VAIA

36 607 819

Spare parts list

| No. | Item Number | Name | Quantity used | Delivery time |
|-----|--------------------|------|---------------|---------------|
| | 90 90 03 143 00 90 | top | 4 | 2 |