








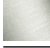
SYMETRICS Wall valve anti-clockwise closing 1/2" - Brushed Dark Platinum

IMO

36 607 985



- rosette 60 x 60 mm
- head part with cut-to-length spindle and sleeve
- WRAS 2011026, 2010066

	Brushed Dark Platinum	36 607 985-99
	Chrome	36 607 985-00
	Brushed Platinum	36 607 985-06
	Platinum	36 607 985-08
	Dark Chrome	36 607 985-19
	Brushed Light Gold	36 607 985-27
	Brushed Durabass (23kt Gold)	36 607 985-28
	Brushed Chrome	36 607 985-93

Required miscellaneous



- Wall valve 1/2" -** 35 607 970 90
- max. recess depth 145 mm
 - min. recess depth 75 mm

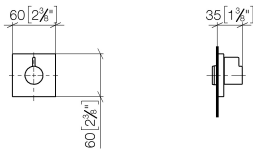


SYMETRICS Wall valve anti-clockwise closing 1/2" - Brushed Dark Platinum

IMO

36 607 985

mm [inches]



Codes & Standards

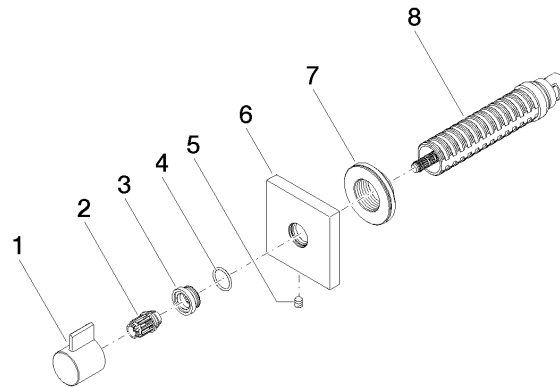
ASME A112.18.1	cUPC	DIN 4109	EN 1111
EN 200	ISO 3822	Scottish Water Byelaws	UK Water Supply Regulations

Ü-Zeichen

Certificates

DVGW_DW-6501DN0	IAPMO_4976	WRAS_2010	LGA_29	LGA_29
DVGW_DW-6512DN0	WRAS_2011			

Product version from 6/1/2024





SYMETRICS Wall valve anti-clockwise closing 1/2" - Brushed Dark Platinum

IMO

36 607 985

Spare parts list

Product version from 6/1/2024

No.	Item Number	Name	Quantity used	Delivery time
	09 20 98 002-99	handle	8	30