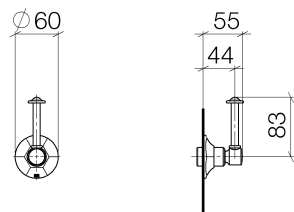


36 608 371

• WRAS 2010066



36 608 371

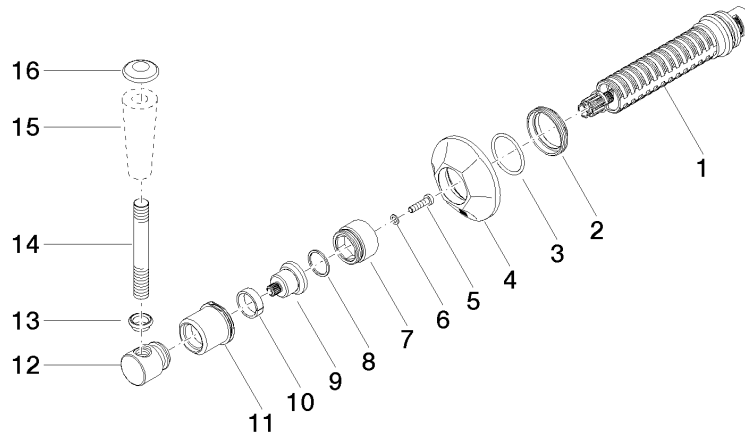


Codes & Standards

ASME A112.18.1	cUPC	Scottish Water Byelaws	UK Water Supply Regulations
----------------	------	---------------------------	--------------------------------

Certificates

IAPMO_4976	WRAS_2010
------------	-----------





MADISON Wall valve clockwise closing 3/4" - Durabrass (23kt Gold)

MADISON

36 608 371

Spare parts list

No.	Item Number	Name	Quantity used	Delivery time
	90 90 03 127 00 90	top	16	2