

IMO Wall valve anti-clockwise closing 3/4" - Chrome

IMO

36 608 980



- rosette 60 x 60 mm
- head part with cut-to-length spindle and sleeve

	Chrome	36 608 980-00
	Brushed Platinum	36 608 980-06
	Platinum	36 608 980-08
	Dark Chrome	36 608 980-19
	Brushed Light Gold	36 608 980-27
	Brushed Durabronz (23kt Gold)	36 608 980-28
	Matte Black	36 608 980-33
	Brushed Chrome	36 608 980-93
	Brushed Dark Platinum	36 608 980-99

Required miscellaneous

- Wall valve 3/4" -** 35 608 970 90
- max. recess depth 145 mm
  - min. recess depth 75 mm



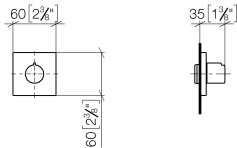


IMO Wall valve anti-clockwise closing 3/4" - Chrome

IMO

36 608 980

mm [inches]



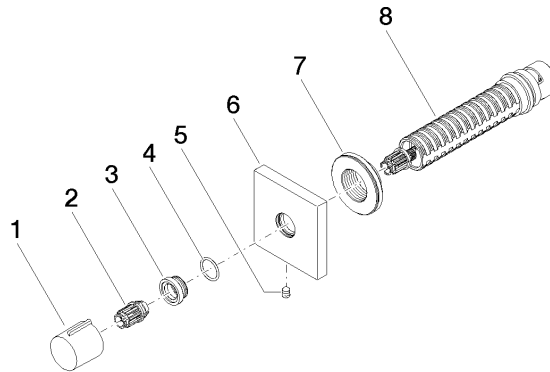
Codes & Standards

ASME A112.18.1	cUPC	Scottish Water Byelaws	UK Water Supply Regulations
----------------	------	---------------------------	--------------------------------

Certificates

IAPMO_4976	WRAS_2010
------------	-----------

**Product version from 6/1/2024**





## IMO Wall valve anti-clockwise closing 3/4" - Chrome

IMO

36 608 980

### Spare parts list

#### Product version from 6/1/2024

No.	Item Number	Name	Quantity used	Delivery time
	09 20 98 001-00	handle	8	10