







MADISON Wall-mounted basin mixer without pop-up waste - Brushed Platinum

MADISON

36 712 361



- 190mm projection
- fixed spout
- circular, air-enriched flow
- hole diameter valve 40 mm
- hole diameter spout 40 mm
- slide-on rosettes Ø 55 mm
- max. flow 7 l/min
- lead-free
- This product can help a building meet the requirements of Green Building Rating Systems, e.g. LEED®, BREEAM®, DGNB

| | | |
|--|-------------------------------|---------------|
|  | Brushed Platinum | 36 712 361-06 |
|  | Chrome | 36 712 361-00 |
|  | Platinum | 36 712 361-08 |
|  | Durabrand (23kt Gold) | 36 712 361-09 |
|  | Brushed Durabrand (23kt Gold) | 36 712 361-28 |
|  | Brushed Dark Platinum | 36 712 361-99 |

Required miscellaneous



**Concealed wall-mounted mixer
centred spout -** 35 700 970 90

- max. recess depth 145 mm
- min. recess depth 85 mm

Required miscellaneous

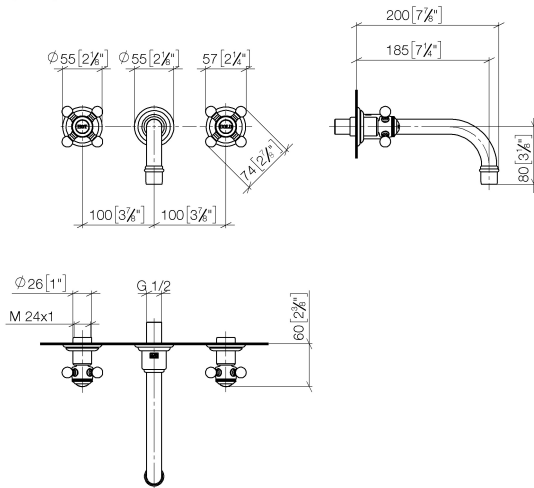


**Concealed wall-mounted mixer
variable positioning -** 35 720 970 90

- max. recess depth 145 mm
- min. recess depth 85 mm

36 712 361

mm [inches]



Flow rate chart



Codes & Standards

DIN 4109

ISO 3822

Ü-Zeichen



MADISON Wall-mounted basin mixer without pop-up waste - Brushed Platinum

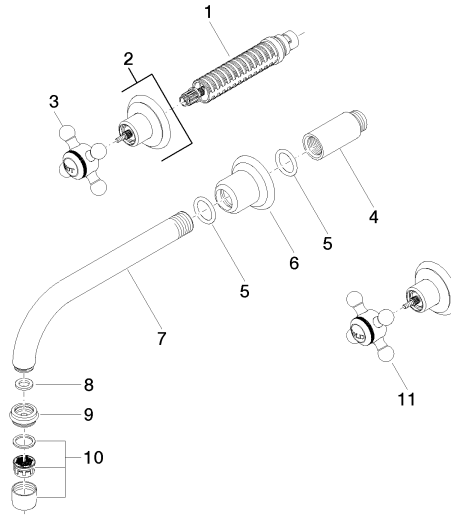
MADISON

36 712 361

Certificates

LGA_19

Product version from 7/3/2016



36 712 361-FF



MADISON Wall-mounted basin mixer without pop-up waste - Brushed Platinum

MADISON

36 712 361

Spare parts list

Product version from 7/3/2016

| No. | Item Number | Name | Quantity used | Delivery time |
|-----|--------------------|------|---------------|---------------|
| | 90 90 03 157 00 90 | top | 13 | 2 |