

META Wall-mounted single-lever basin mixer without pop-up waste - Matte Black

META


36 805 661 Product version from 4/1/2024



- 160mm projection
- fixed spout
- circular, air-enriched flow
- hole diameter 60 mm
- rosette Ø 78 mm
- max. spout flow rate 5.7 l/min
- with single-point mounting

	Matte Black	36 805 661-33
	Chrome	36 805 661-00
	Brushed Platinum	36 805 661-06
	Dark Chrome	36 805 661-19
	Light Gold	36 805 661-26
	Brushed Light Gold	36 805 661-27
	Brushed Bronze	36 805 661-42
	Brushed Champagne (22kt Gold)	36 805 661-46
	Champagne (22kt Gold)	36 805 661-47
	Brushed Chrome	36 805 661-93
	Brushed Dark Platinum	36 805 661-99

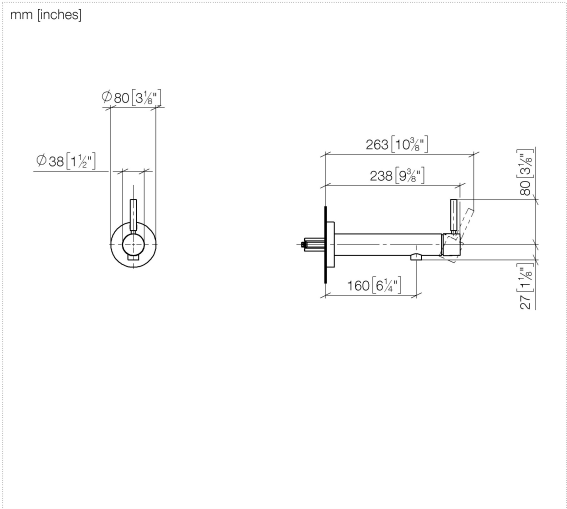
Required miscellaneous

	Concealed wall mounting - •min. recess depth 80 mm •max. recess depth 105 mm	35 050 970 90
---	---	---------------

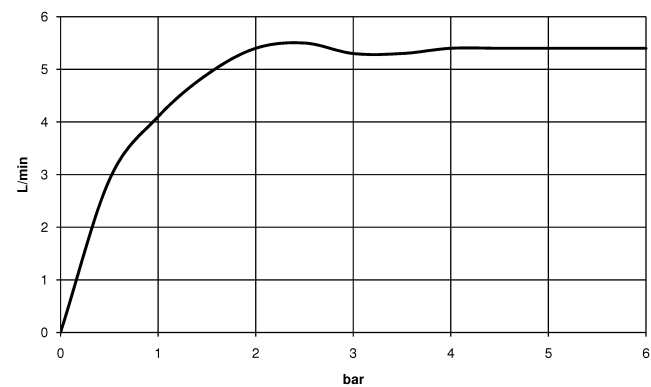
META Wall-mounted single-lever basin mixer without pop-up waste - Matte Black

META

36 805 661 Product version from 4/1/2024



Flow rate chart



Codes & Standards

DIN 4109

ISO 3822

Ü-Zeichen



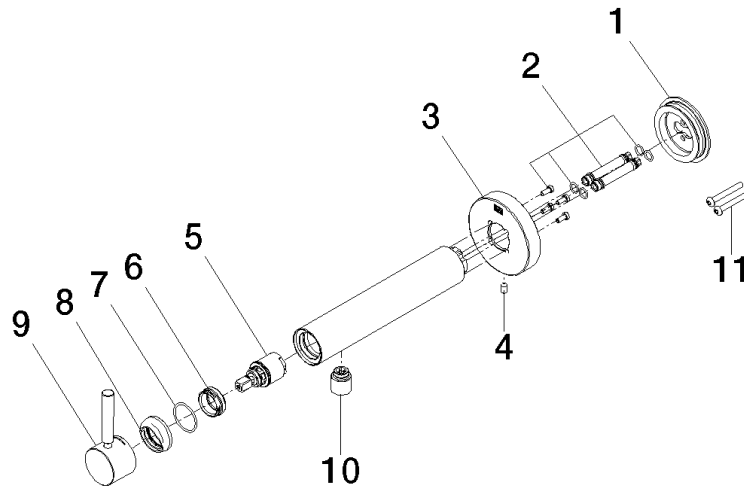
META Wall-mounted single-lever basin mixer without pop-up waste - Matte Black

META

36 805 661 Product version from 4/1/2024

Certificates and sustainability

LGA_38



Spare parts list

No.	Item Number	Name	Quantity used	Delivery time
3	90 27 66 026 00-33	rosette	1.00	30
8	09 28 30 043-33	cover	1.00	30
5	90 15 05 044 00 90	cartridge	1.00	2
1	90 30 11 232 00 90	disc	1.00	2
4	09 31 11 144 90	pin	1.00	2
9	90 20 66 024 00-33	handle	1.00	30
7	09 14 10 120 90	seal	1.00	2
10	90 23 01 168 00-33	aerator	1.00	30
6	09 24 04 266 90	nut	1.00	2
11	90 30 30 229 00 90	screw	2.00	2
2	90 24 01 046 01 90	connection	2.00	2