

META Wall-mounted single-lever basin mixer without pop-up waste - Dark Chrome

META

36 860 660



- 190mm projection
- fixed spout
- circular, air-enriched flow
- hole diameter spout 37 mm
- hole diameter single-lever mixer 57 mm
- rosette for spout Ø 55mm
- rosette for mixer Ø 78mm
- max. flow 5.7 l/min
- lead-free
- This product can help a building meet the requirements of Green Building Rating Systems, e.g. LEED®, BREEAM®, DGNB
- WRAS 2107018

| | | |
|--|-------------------------------|---------------|
| | Dark Chrome | 36 860 660-19 |
| | Chrome | 36 860 660-00 |
| | Brushed Platinum | 36 860 660-06 |
| | Light Gold | 36 860 660-26 |
| | Brushed Light Gold | 36 860 660-27 |
| | Matte Black | 36 860 660-33 |
| | Brushed Bronze | 36 860 660-42 |
| | Brushed Champagne (22kt Gold) | 36 860 660-46 |
| | Champagne (22kt Gold) | 36 860 660-47 |
| | Brushed Chrome | 36 860 660-93 |
| | Brushed Dark Platinum | 36 860 660-99 |

Required miscellaneous



Concealed wall-mounted single-lever mixer mixer on right -

35 816 970 90

- NOTE: Not suitable for concealed installation. Connection by means of angle valves, mounted with screws to back wall.

Required miscellaneous



Concealed wall-mounted single-lever mixer -

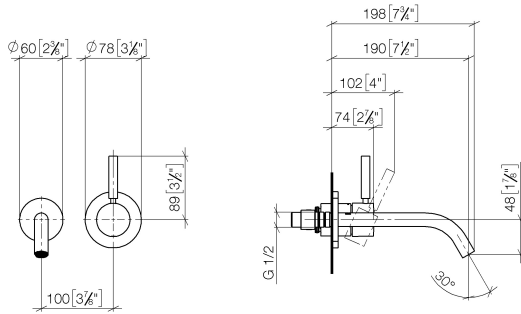
35 860 970 90

- max. recess depth 95 mm
- min. recess depth 80 mm

META Wall-mounted single-lever basin mixer without pop-up waste - Dark Chrome

META

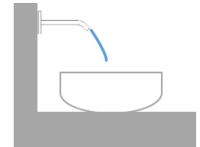
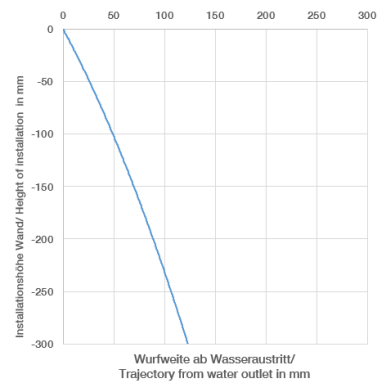
36 860 660
mm [inches]



Flow rate chart



Trajectory diagram



Codes & Standards

EN 817

Scottish Water
Byelaws

UK Water Supply
Regulations



META Wall-mounted single-lever basin mixer without pop-up waste - Dark Chrome

META

36 860 660

Certificates

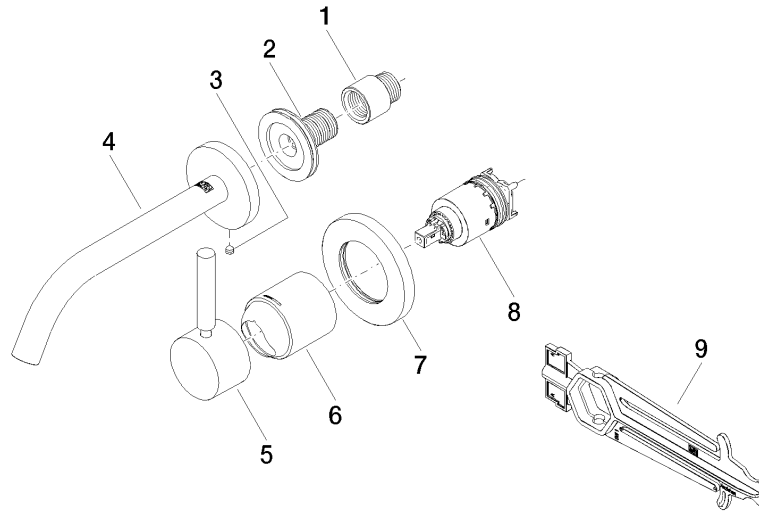
WRAS_2107

DVGW_DW-
6512DN0

META Wall-mounted single-lever basin mixer without pop-up waste - Dark Chrome

META

36 860 660





META Wall-mounted single-lever basin mixer without pop-up waste - Dark Chrome

META

36 860 660

Spare parts list