

VAIA Wall-mounted single-lever basin mixer without pop-up waste - Brushed Durabronze (23kt Gold)

VAIA

36 860 809



- 190mm projection
- fixed spout
- circular, air-enriched flow
- hole diameter spout 37 mm
- hole diameter single-lever mixer 57 mm
- rosette for single-lever mixer Ø 78mm
- rosette for spout Ø 60mm
- max. flow 5.7 l/min
- lead-free
- This product can help a building meet the requirements of Green Building Rating Systems, e.g. LEED®, BREEAM®, DGNB
- WRAS 2107018

| | | |
|--|--------------------------------|---------------|
|  | Brushed Durabronze (23kt Gold) | 36 860 809-28 |
|  | Chrome | 36 860 809-00 |
|  | Brushed Platinum | 36 860 809-06 |
|  | Platinum | 36 860 809-08 |
|  | Dark Chrome | 36 860 809-19 |
|  | Brushed Bronze | 36 860 809-42 |
|  | Brushed Champagne (22kt Gold) | 36 860 809-46 |
|  | Champagne (22kt Gold) | 36 860 809-47 |
|  | Brushed Dark Platinum | 36 860 809-99 |

Required miscellaneous



Concealed wall-mounted single-lever mixer mixer on right - 35 816 970 90

- NOTE: Not suitable for concealed installation. Connection by means of angle valves, mounted with screws to back wall.

Required miscellaneous



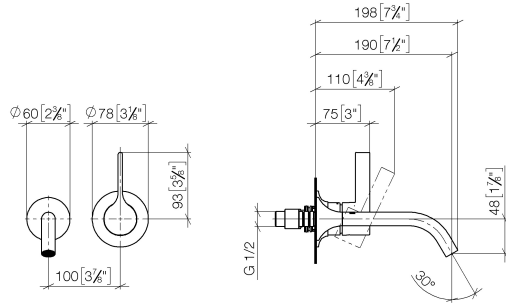
Concealed wall-mounted single-lever mixer - 35 860 970 90

- max. recess depth 95 mm
- min. recess depth 80 mm

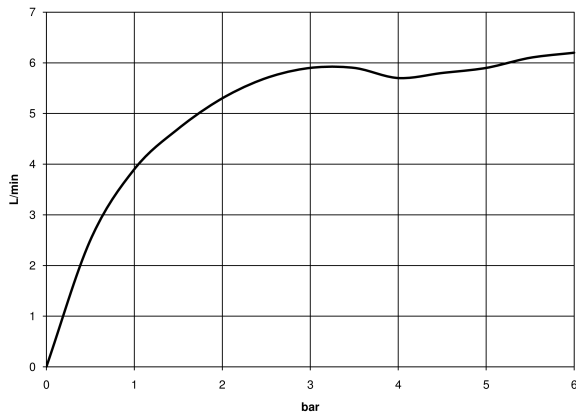
VAIA Wall-mounted single-lever basin mixer without pop-up waste - Brushed Durabron (23kt Gold)

VAIA

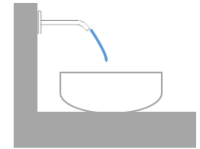
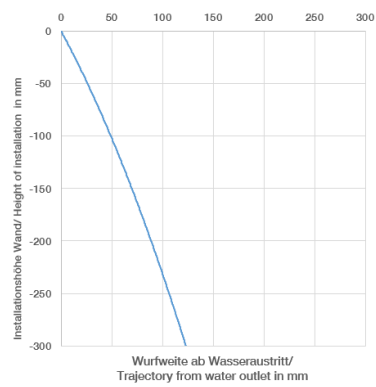
36 860 809
mm [inches]



Flow rate chart



Trajectory diagram



Codes & Standards

DIN 4109

EN 817

ISO 3822

Scottish Water
Byelaws

UK Water Supply
Regulations

Ü-Zeichen



VAIA Wall-mounted single-lever basin mixer without pop-up waste - Brushed
Durabross (23kt Gold)

VAIA

36 860 809

Certificates

WRAS_2107

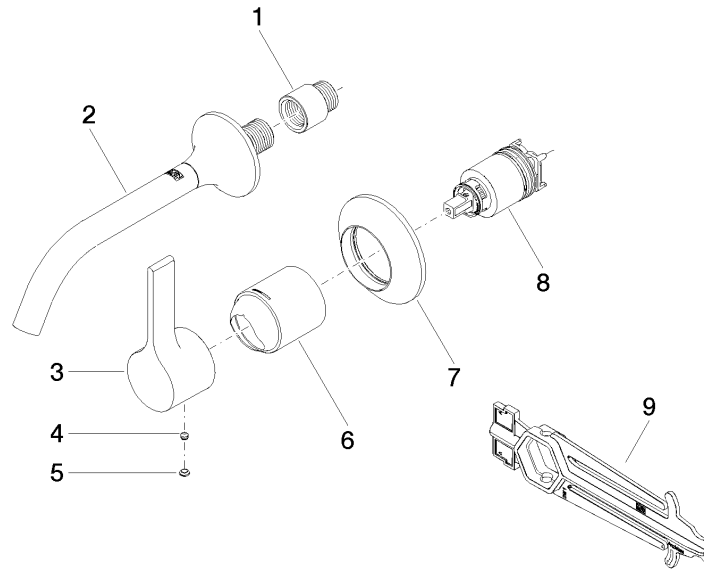
LGA_29

DVGW_DW-
6512DN0

**VAIA Wall-mounted single-lever basin mixer without pop-up waste - Brushed
Durabronz (23kt Gold)**

VAIA

36 860 809





VAIA Wall-mounted single-lever basin mixer without pop-up waste - Brushed
Durabrass (23kt Gold)

VAIA

36 860 809

Spare parts list

| No. | Item Number | Name | Quantity used | Delivery time |
|-----|--------------------|--------|---------------|---------------|
| | 09 24 03 072 10 90 | nipple | 9 | 2 |