

VAIA Wall-mounted single-lever basin mixer without pop-up waste - Brushed Dark Brass

VAIA

36 860 809 Product version from 4/1/2025



- 190mm projection
- fixed spout
- circular, air-enriched flow
- hole diameter spout 37 mm
- hole diameter single-lever mixer 57 mm
- rosette for single-lever mixer Ø 78mm
- rosette for spout Ø 60mm
- max. flow 5.7 l/min
- lead-free
- This product can help a building meet the requirements of Green Building Rating Systems, e.g. LEED®, BREEAM®, DGNB
- WRAS

	Brushed Dark Brass	36 860 809-39
	Chrome	36 860 809-00
	Brushed Platinum	36 860 809-06
	Platinum	36 860 809-08
	Dark Chrome	36 860 809-19
	Brushed Durabronze (23kt Gold)	36 860 809-28
	Brushed Bronze	36 860 809-42
	Brushed Champagne (22kt Gold)	36 860 809-46
	Champagne (22kt Gold)	36 860 809-47
	Brushed Dark Platinum	36 860 809-99

Required miscellaneous



Concealed wall-mounted single-lever mixer - 35 860 970 90

- min. recess depth 80 mm
- max. recess depth 95 mm
- mixer can be placed above, to the left or to the right of the spout.

VAIA Wall-mounted single-lever basin mixer without pop-up waste - Brushed Dark Brass

VAIA

36 860 809 Product version from 4/1/2025
mm [inches]



Flow rate chart



Trajectory diagram



Codes & Standards

EN 817

Scottish Water
Byelaws

UK Water Supply
Regulations



VAIA Wall-mounted single-lever basin mixer without pop-up waste - Brushed Dark Brass

VAIA

36 860 809 Product version from 4/1/2025

Certificates and sustainability

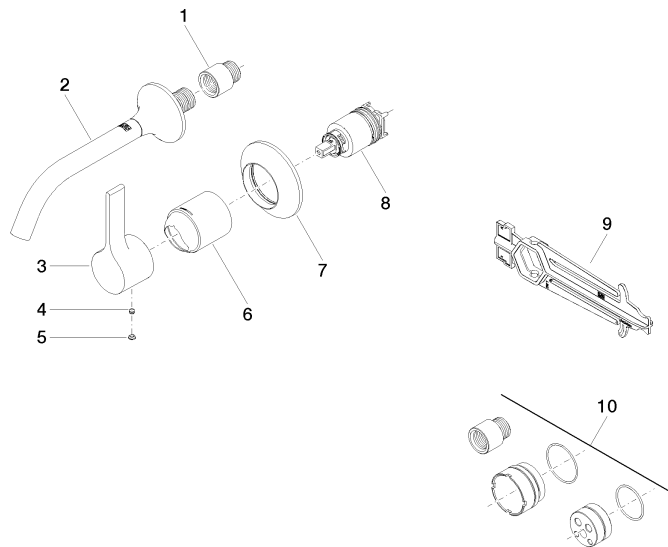
DVGW_DW-
6512DN0

WRAS_2107

VAIA Wall-mounted single-lever basin mixer without pop-up waste - Brushed Dark Brass

VAIA

36 860 809 Product version from 4/1/2025



Spare parts list

No.	Item Number	Name	Quantity used	Delivery time
2	13 800 809-39	VAIA Wall-mounted basin spout without pop-up waste - Brushed Dark Brass	1.00	30
8	90 15 05 064 01 90	cartridge	1.00	2
3	09 20 80 021-39	handle	1.00	60
6	09 11 02 288-39	cover	1.00	60
5	90 31 20 087 00-39	plug	1.00	30
9	90 30 09 064 00 90	key	1.00	2
7	90 27 80 012 00-39	rosette	1.00	30
10	12 869 970 90	Extension 20 mm -	1.00	2
4	90 31 11 063 00 90	pin	1.00	2
1	09 24 03 072 10 90	nipple	1.00	2