





DORNBACHT YAMOU Wall-mounted single-lever basin mixer without pop-up waste - Chrome

36 860 831



- 170mm projection
- fixed spout
- circular, air-enriched flow
- hole diameter spout 37 mm
- hole diameter single-lever mixer 57 mm
- rosette for spout Ø 60mm
- max. flow 6.8 l/min
- rosette for mixer Ø 78mm
- WRAS 240504010

	Chrome	36 860 831-00
	Soft Black	36 860 831-69

Required miscellaneous

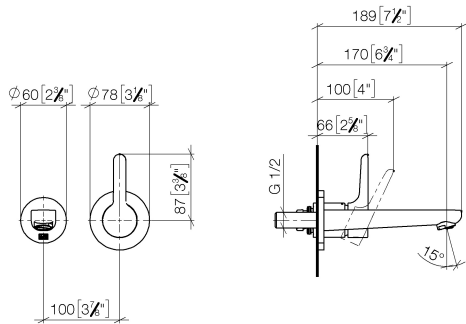


**EDITION PRO Concealed wall-mounted single-lever mixer mixer on right -** 35 870 970 90

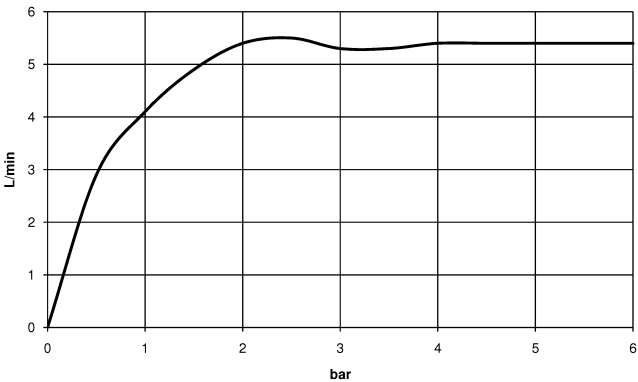


DORNBRACHT YAMOU Wall-mounted single-lever basin mixer without pop-up waste - Chrome

36 860 831  
mm [inches]



Flow rate chart



Codes & Standards

DIN 4109	ISO 3822	Scottish Water Byelaws	UK Water Supply Regulations
Ü-Zeichen	XP P 41-280		



## DORNBACHT YAMOU Wall-mounted single-lever basin mixer without pop-up waste - Chrome

---

36 860 831

Certificates

---

AbP\_10

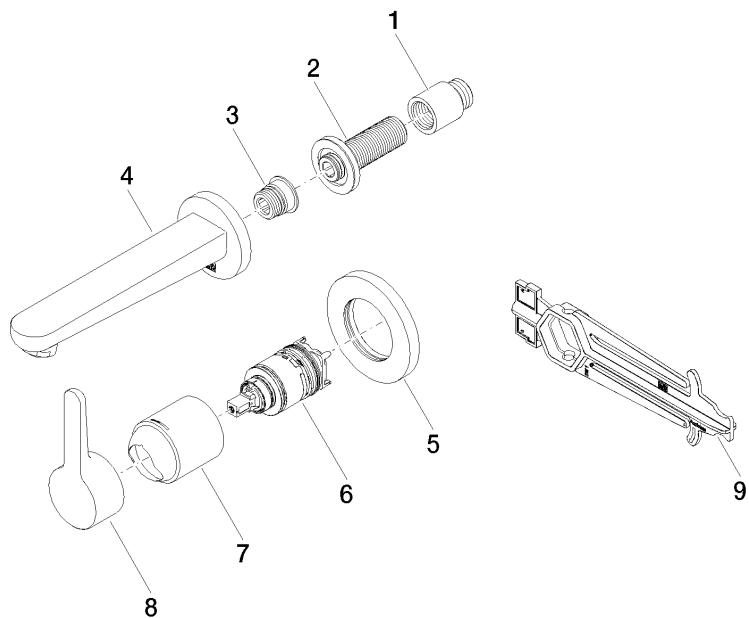
ACS\_23 ACC NY

WRAS\_240504

# DORNBRAUCHT YAMOU Wall-mounted single-lever basin mixer without pop-up waste - Chrome

36 860 831

**Product version from 1/1/2023**





DORNBRACHT YAMOU Wall-mounted single-lever basin mixer without pop-up waste - Chrome

---

36 860 831

**Spare parts list**

**Product version from 1/1/2023**

No.	Item Number	Name	Quantity used	Delivery time
	09 24 03 080 90	extension	8	2