







LISSÉ Wall-mounted single-lever basin mixer without pop-up waste - Dark Chrome

LISSÉ

36 860 845



- 170mm projection
- fixed spout
- circular, air-enriched flow
- hole diameter spout 37 mm
- hole diameter single-lever mixer 57 mm
- rosette 78 x 78 mm
- max. flow 5.7 l/min
- lead-free
- This product can help a building meet the requirements of Green Building Rating Systems, e.g. LEED®, BREEAM®, DGNB
- WRAS 2107018

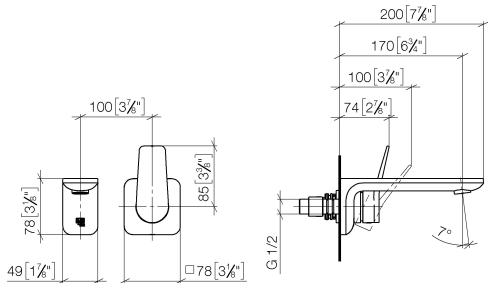
| | | |
|--|-----------------------|---------------|
|  | Dark Chrome | 36 860 845-19 |
|  | Chrome | 36 860 845-00 |
|  | Brushed Platinum | 36 860 845-06 |
|  | Matte Black | 36 860 845-33 |
|  | Brushed Chrome | 36 860 845-93 |
|  | Brushed Dark Platinum | 36 860 845-99 |



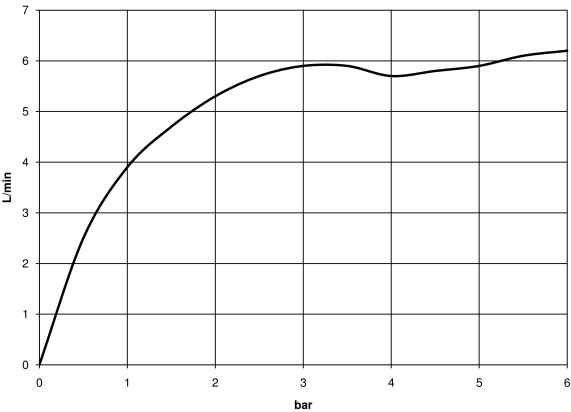
LISSE Wall-mounted single-lever basin mixer without pop-up waste - Dark Chrome

LISSE

36 860 845
mm [inches]



Flow rate chart



Codes & Standards

| | | | |
|--------|--------|-------|------------------------|
| EN 817 | NSF372 | NSF61 | Scottish Water Byelaws |
|--------|--------|-------|------------------------|

UK Water Supply Regulations



LISSÉ Wall-mounted single-lever basin mixer without pop-up waste - Dark Chrome

LISSÉ

36 860 845

Certificates

WRAS_2107

IAPMO_6397

IAPMO_N-4976

DVGW_DW-
6512DN0

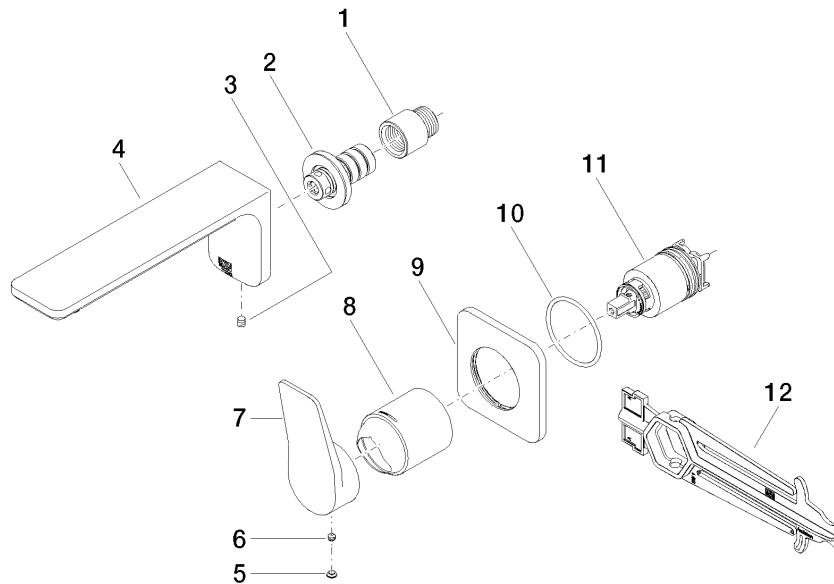
LISSÉ Wall-mounted single-lever basin mixer without pop-up waste - Dark Chrome

LISSÉ

36 860 845

Product version from 4/1/2024

Parts for other
finishes can be found
here: [Chrome](#)





LISSE Wall-mounted single-lever basin mixer without pop-up waste - Dark Chrome

LISSE

36 860 845

Spare parts list

Product version from 4/1/2024

| No. | Item Number | Name | Quantity used | Delivery time |
|-----|--------------------|--------|---------------|---------------|
| | 09 24 03 072 10 90 | nipple | 12 | 2 |