

Single sink - Stainless Steel

38 450 003



- under-mounted
 - 450 x 400 mm
 - sink depth 175 mm
 - suitable for base units 500 mm
 - radius 12 mm
- Drain and overflow set not included in the scope of supply. See Required miscellaneous.**
- Drain and overflow set not included in the scope of supply. See Required miscellaneous.

Required miscellaneous



Pop-up waste and overflow with electronic control - Stainless Steel 10 410 003-85

- 3½" electronic drain valve (TouchFlow)

Required miscellaneous



Pop-up waste and overflow with knob - Stainless Steel 10 405 003-85

- 3½" strainer waste valve

Required miscellaneous



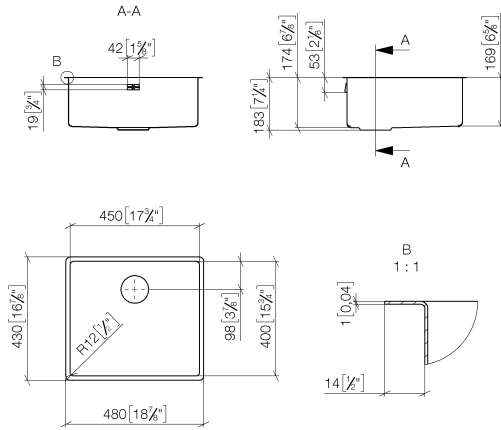
Pop-up waste and overflow closable by hand - Stainless Steel 10 400 003-85

- 3½" drain valve closable by hand

Single sink - Stainless Steel

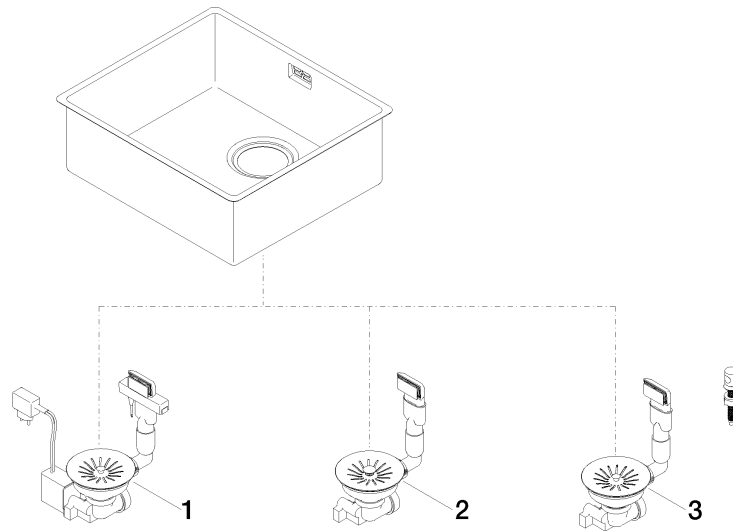
38 450 003

mm [inches]



Single sink - Stainless Steel

38 450 003





Single sink - Stainless Steel

38 450 003

Spare parts list

No.	Item Number	Name	Quantity used	Delivery time
	10 410 003-85	Pop-up waste and overflow with electronic control - Stainless Steel	3	2