

Hooks in two parts - Brushed Bronze

SERIES SPECIFIC

83 256 979

Product version from 11/1/2004



- width 80mm
- rosette Ø 40 mm
- 55mm projection

Fits ELIO, ENO, MEM, META SQUARE, SYNC and TARA ULTRA

	Brushed Bronze	83 256 979-42
	Chrome	83 256 979-00
	Brushed Platinum	83 256 979-06
	Dark Chrome	83 256 979-19
	Brushed Durabrass (23kt Gold)	83 256 979-28
	Matte Black	83 256 979-33
	Brushed Dark Brass	83 256 979-39
	Brushed Champagne (22kt Gold)	83 256 979-46
	Champagne (22kt Gold)	83 256 979-47
	Brushed Chrome	83 256 979-93
	Brushed Dark Platinum	83 256 979-99

## Hooks in two parts - Brushed Bronze

SERIES SPECIFIC

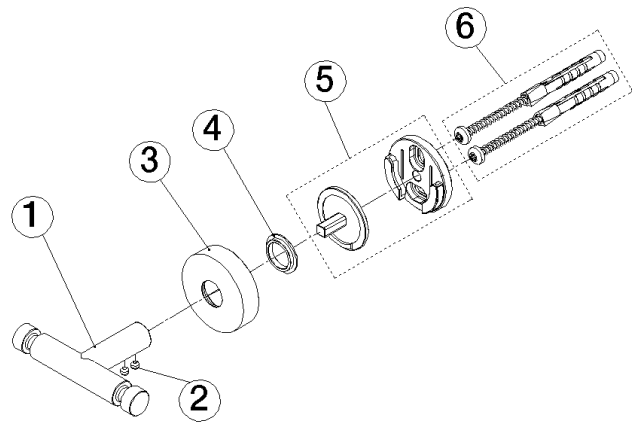
83 256 979 Product version from 11/1/2004

mm [inches]



83 256 979 Product version from 11/1/2004

Parts for other  
finishes can be found  
here: [Chrome](#)



### Spare parts list

No.	Item Number	Name	Quantity used	Delivery time
4	08 30 11 516 90	ring	1.00	2
1	05 18 60 519 01-42	hook	1.00	60
6	05 30 31 025 00 90	fixing set	1.00	2
2	90 31 11 038 00 90	pin	2.00	2
3	08 27 97 500-42	rosette	1.00	60
5	05 17 97 501 01 90	holder	1.00	2