

TARA Tissue holder without cover - Brushed Champagne (22kt Gold)

83 500 892 Product version from 4/1/2024



- width 152mm
- height 100 mm
- rosette Ø 55 mm
- 72mm projection

| | | |
|---|--------------------------------|---------------|
|  | Brushed Champagne (22kt Gold) | 83 500 892-46 |
|  | Chrome | 83 500 892-00 |
|  | Brushed Platinum | 83 500 892-06 |
|  | Platinum | 83 500 892-08 |
|  | Dark Chrome | 83 500 892-19 |
|  | Brushed Durabronze (23kt Gold) | 83 500 892-28 |
|  | Matte Black | 83 500 892-33 |
|  | Brushed Bronze | 83 500 892-42 |
|  | Champagne (22kt Gold) | 83 500 892-47 |
|  | Brushed Chrome | 83 500 892-93 |
|  | Brushed Dark Platinum | 83 500 892-99 |

TARA Tissue holder without cover - Brushed Champagne (22kt Gold)

83 500 892 Product version from 4/1/2024

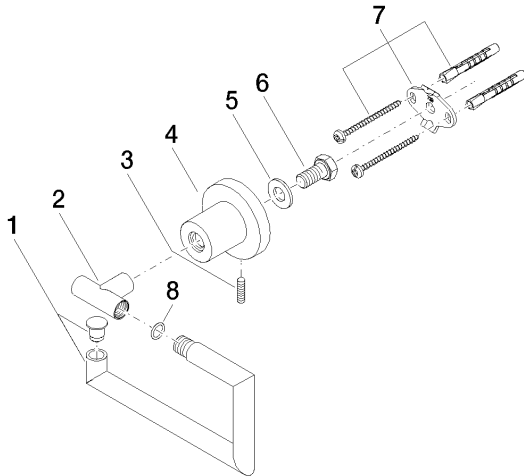
mm [inches]



TARA Tissue holder without cover - Brushed Champagne (22kt Gold)

83 500 892 Product version from 4/1/2024

Parts for other
finishes can be found
here: [Chrome](#)



Spare parts list

| No. | Item Number | Name | Quantity used | Delivery time |
|-----|--------------------|------------|---------------|---------------|
| 1 | 90 28 22 640 00-46 | holder | 1 | 30 |
| 2 | 05 17 89 552 00-46 | holder | 1 | 30 |
| 3 | 04 31 11 113 00 90 | pin | 1 | 2 |
| 4 | 08 17 89 505-46 | holder | 1 | 30 |
| 5 | 09 30 11 046 90 | disc | 1 | 2 |
| 6 | 09 30 30 071 90 | screw | 1 | 2 |
| 7 | 05 17 20 739 00 90 | fixing set | 1 | 2 |
| 8 | 09 14 10 042 90 | seal | 1 | 2 |