

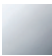

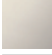


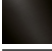
SYMETRICS Tissue holder without cover - Chrome

IMO

83 500 980

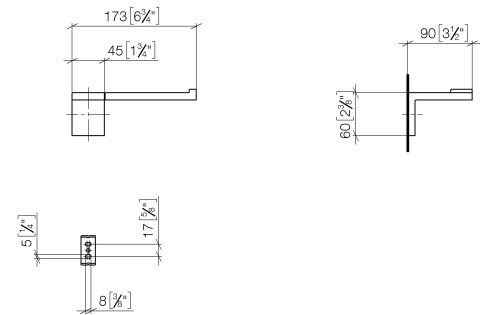


- width 175mm
- height 60 mm
- 90mm projection

	Chrome	83 500 980-00
	Brushed Platinum	83 500 980-06
	Platinum	83 500 980-08
	Brushed Durabrass (23kt Gold)	83 500 980-28
	Matte Black	83 500 980-33
	Brushed Dark Platinum	83 500 980-99

83 500 980

mm [inches]

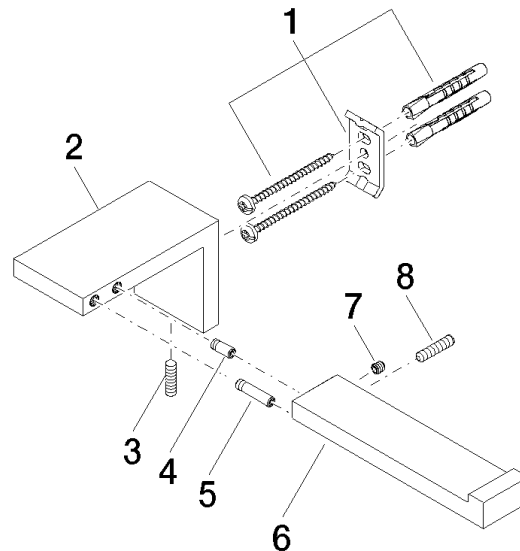


SYMETRICS Tissue holder without cover - Chrome

IMO

83 500 980

Parts for other
finishes can be found
here: Brushed
Platinum



Spare parts list

No.	Item Number	Name	Quantity used	Delivery time
1	05 17 20 736 00 90	fixing set	1	2
2	08 17 98 500-00	holder	1	10
3	04 31 11 113 00 90	pin	1	2
4	09 31 11 204 90	pin	1	2
5	09 31 11 203 90	pin	1	2
6	08 17 98 554-00	holder	1	10
7	90 31 11 030 00 90	pin	1	2
8	09 31 11 059 90	pin	1	2