

TARA Tissue holder with cover - Brushed Chrome

TARA

83 510 892 Product version from 4/1/2024



- width 152mm
- height 100 mm
- rosette Ø 55 mm
- 77mm projection

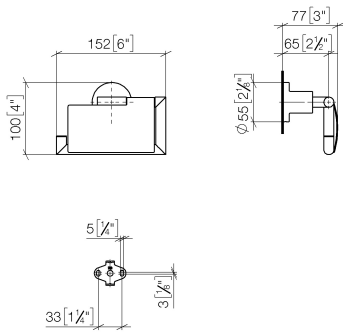
| | | |
|---|----------------------------------|---------------|
|  | Brushed Chrome | 83 510 892-93 |
|  | Chrome | 83 510 892-00 |
|  | Brushed Platinum | 83 510 892-06 |
|  | Platinum | 83 510 892-08 |
|  | Dark Chrome | 83 510 892-19 |
|  | Brushed Durabrass (23kt Gold) | 83 510 892-28 |
|  | Matte Black | 83 510 892-33 |
|  | Brushed Dark Brass | 83 510 892-39 |
|  | Brushed Bronze | 83 510 892-42 |
|  | Brushed Champagne (22kt Gold) | 83 510 892-46 |
|  | Champagne (22kt Gold) | 83 510 892-47 |
|  | Brushed Dark Platinum | 83 510 892-99 |

TARA Tissue holder with cover - Brushed Chrome

TARA

83 510 892 Product version from 4/1/2024

mm [inches]

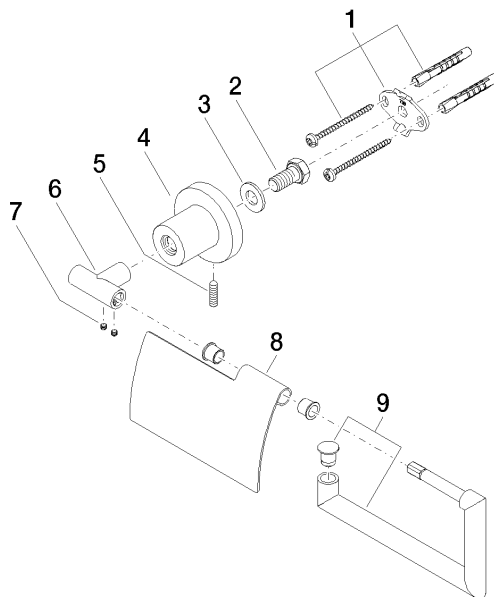


TARA Tissue holder with cover - Brushed Chrome

TARA

83 510 892 Product version from 4/1/2024

Parts for other
finishes can be found
here: [Chrome](#)



Spare parts list

| No. | Item Number | Name | Quantity used | Delivery time |
|-----|----------------------|------------|---------------|---------------|
| | 4 08 17 89 505-93 | holder | 1.00 | 20 |
| | 6 05 17 89 553 00-93 | holder | 1.00 | 20 |
| | 3 09 30 11 046 90 | disc | 1.00 | 2 |
| | 9 90 28 22 641 00-93 | holder | 1.00 | 20 |
| | 5 04 31 11 113 00 90 | pin | 1.00 | 2 |
| | 1 05 17 20 739 00 90 | fixing set | 1.00 | 2 |
| | 2 09 30 30 071 90 | screw | 1.00 | 2 |
| | 8 08 11 02 514-93 | lid | 1.00 | 20 |
| | 7 90 31 11 038 00 90 | pin | 2.00 | 2 |