







MADISON xTOOL Thermostat module with 2 valves - Platinum

MADISON

ST 060 112 0360



- cover plate Ø 124 mm
- rosette Ø 55 mm
- temperature control handle with safety limit stop at 38°C
- thermostat cartridge
- 2x head part with cut-to-length spindle and sleeve

	Platinum	ST 060 112 0360-08
	Chrome	ST 060 112 0360-00
	Brushed Platinum	ST 060 112 0360-06
	Durabrand (23kt Gold)	ST 060 112 0360-09
	Brushed Durabrand (23kt Gold)	ST 060 112 0360-28
	Brushed Dark Platinum	ST 060 112 0360-99

Individual components of this set

You need the following components for this set

1x 36 503 977-08



2x 36 607 361-08









MADISON xTOOL Thermostat module with 2 valves - Platinum

MADISON

ST 060 112 0360



- cover plate Ø 124 mm
- temperature control handle with safety limit stop at 38°C
- thermostat cartridge
- WRAS 2011026

	Platinum	36 503 977-0
	Chrome	36 503 977-0
	Brushed Platinum	36 503 977-0
	Durabrand (23kt Gold)	36 503 977-0
	Brushed Durabrand (23kt Gold)	36 503 977-2
	Brushed Dark Platinum	36 503 977-9

ST 060 112 0360

8
—
0
—
6
—
9
—
8
—
9
—

Required miscellaneous

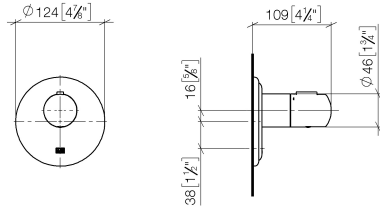


**xTOOL Concealed thermostat
module without volume control -**
●max. recess depth 110 mm
●min. recess depth 85 mm

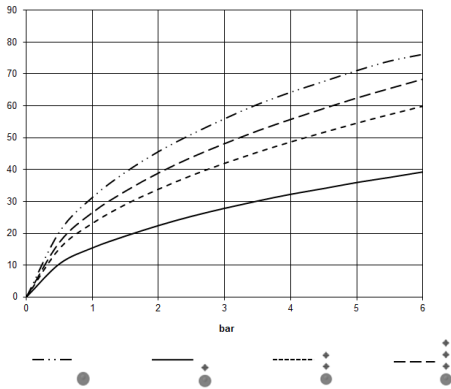
35 503 970 90

ST 060 112 0360

mm [inches]



Flow rate chart



Certificates

LGA_29	LGA_29	DVGW_DW-6512DN0	WRAS_2011
--------	--------	-----------------	-----------



ST 060 112 0360

Codes & Standards

DIN 4109	EN 1111	ISO 3822	Scottish Water Byelaws
UK Water Supply Regulations	Ü-Zeichen		

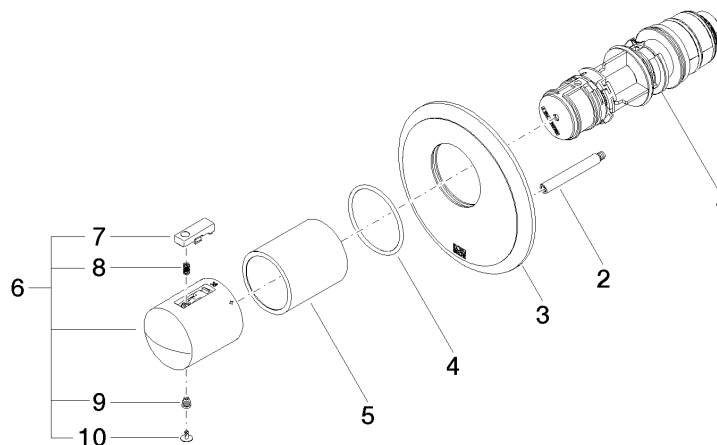
ST 060 112 0360

Product version up to 2/2/2021

Product version from 5/11/2021 to 11/25/2021

Product version from 1/1/2022

Product version from 6/30/2022 to 5/11/2021



ST 060 112 0360

Spare parts list

Product version up to 2/2/2021

Product version from 5/11/2021 to 11/25/2021

Product version from 1/1/2022







Product version from 6/30/2022 to 5/11/2021

No.	Item Number	Name	Quantity used	Delivery time
	90 15 02 063 00 90	cartridge	10	2

ST 060 112 0360




- rosette Ø 55 mm
- head part with cut-to-length spindle and sleeve
- 3x porcelain insert: HOT, COLD and NEUTRAL
- WRAS 2011026, 2010066

	Platinum	36 607 361-0
	Chrome	36 607 361-0
	Brushed Platinum	36 607 361-0
	Durabrand (23kt Gold)	36 607 361-0
	Brushed Durabrand (23kt Gold)	36 607 361-2
	Brushed Dark Platinum	36 607 361-9

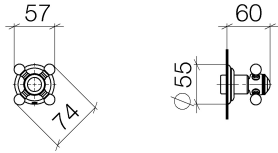
ST 060 112 0360

8
—
0
—
6
—
9
—
8
—
9
—

Required miscellaneous

	Wall valve 1/2" - <ul style="list-style-type: none">•max. recess depth 145 mm•min. recess depth 75 mm	35 607 970 90
---	---	---------------

ST 060 112 0360



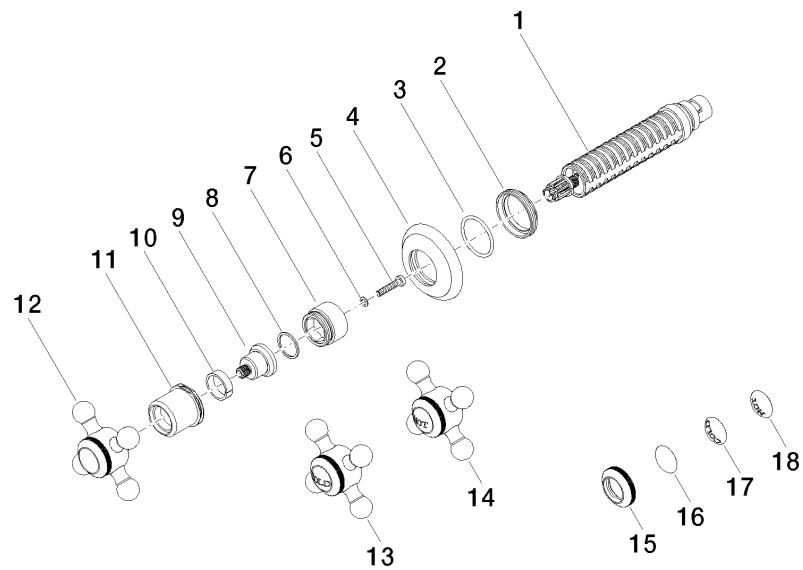
Certificates

IAPMO_4976	DVGW_DW-6501DN0	WRAS_2010	LGA_29	LGA_29
DVGW_DW-6512DN0	WRAS_2011			

Codes & Standards

ASME A112.18.1	cUPC	DIN 4109	EN 1111
EN 200	ISO 3822	Scottish Water Byelaws	UK Water Supply Regulations

Ü-Zeichen





ST 060 112 0360

Spare parts list

No.	Item Number	Name	Quantity used	Delivery time
	90 90 03 143 00 90	top	18	2