







MADISON xTOOL Thermostat module with 2 valves - Brushed Durabrand (23kt Gold)

MADISON

ST 060 112 0360



- cover plate Ø 124 mm
- rosette Ø 55 mm
- temperature control handle with safety limit stop at 38°C
- thermostat cartridge
- 2x head part with cut-to-length spindle and sleeve

	Brushed Durabrand (23kt Gold)	ST 060 112 0360-28
	Chrome	ST 060 112 0360-00
	Brushed Platinum	ST 060 112 0360-06
	Platinum	ST 060 112 0360-08
	Durabrand (23kt Gold)	ST 060 112 0360-09
	Brushed Dark Platinum	ST 060 112 0360-99

Individual components of this set

You need the following components for this set

1x 36 503 977-28



2x 36 607 361-28





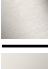

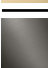

MADISON xTOOL Thermostat module with 2 valves - Brushed Durabrass (23kt Gold)

MADISON

ST 060 112 0360



- cover plate Ø 124 mm
- temperature control handle with safety limit stop at 38°C
- thermostat cartridge
- WRAS 2011026

	Brushed Durabrass (23kt Gold)	36 503 977-2
	Chrome	36 503 977-0
	Brushed Platinum	36 503 977-0
	Platinum	36 503 977-0
	Durabrass (23kt Gold)	36 503 977-0
	Brushed Dark Platinum	36 503 977-9

MADISON xTOOL Thermostat module with 2 valves - Brushed Durabrass (23kt Gold)

MADISON

ST 060 112 0360

8  
—  
10  
—  
16  
—  
18  
—  
19  
—  
19  
—

Required miscellaneous

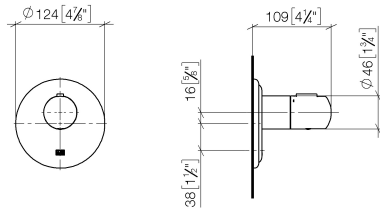


**xTOOL Concealed thermostat  
module without volume control -**

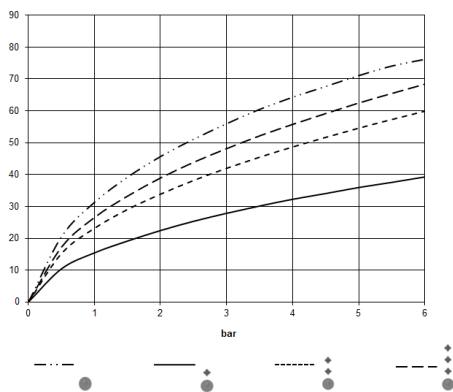
35 503 970 90

- max. recess depth 110 mm
- min. recess depth 85 mm

ST 060 112 0360  
mm [inches]



### Flow rate chart



### Certificates

LGA\_29

LGA\_29

DVGW\_DW-  
6512DN0

WRAS\_2011



MADISON xTOOL Thermostat module with 2 valves - Brushed Durabrass (23kt Gold)

MADISON

ST 060 112 0360

Codes & Standards

DIN 4109	EN 1111	ISO 3822	Scottish Water Byelaws
UK Water Supply Regulations	Ü-Zeichen		



## MADISON xTOOL Thermostat module with 2 valves - Brushed Durabrass (23kt Gold)

---

MADISON

ST 060 112 0360

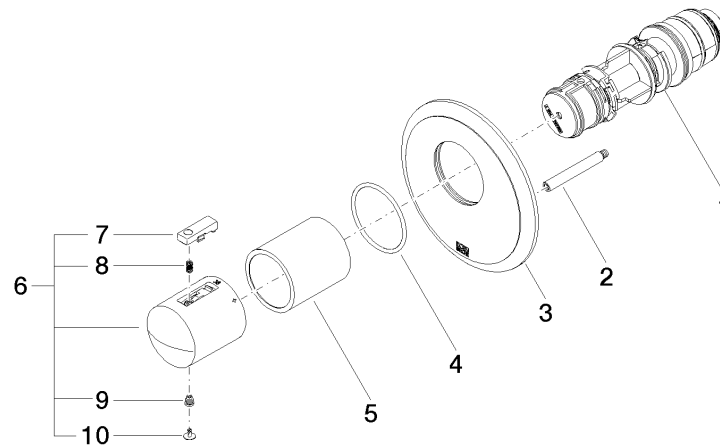
ST 060 112 0360

Product version up to 2/2/2021

Product version from 5/11/2021 to 11/25/2021

Product version from 1/1/2022

**Product version from 6/30/2022 to 5/11/2021**





MADISON xTOOL Thermostat module with 2 valves - Brushed Durabrass (23kt Gold)

MADISON

ST 060 112 0360

Spare parts list

Product version up to 2/2/2021

Product version from 5/11/2021 to 11/25/2021

Product version from 1/1/2022

**Product version from 6/30/2022 to 5/11/2021**

No.	Item Number	Name	Quantity used	Delivery time
	90 15 02 063 00 90	cartridge	10	2



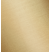




MADISON xTOOL Thermostat module with 2 valves - Brushed Durabrass (23kt Gold)

MADISON

ST 060 112 0360



- rosette Ø 55 mm
- head part with cut-to-length spindle and sleeve
- 3x porcelain insert: HOT, COLD and NEUTRAL
- WRAS 2011026, 2010066

	Brushed Durabrass (23kt Gold)	36 607 361-2
	Chrome	36 607 361-0
	Brushed Platinum	36 607 361-0
	Platinum	36 607 361-0
	Durabrass (23kt Gold)	36 607 361-0
	Brushed Dark Platinum	36 607 361-9


MADISON xTOOL Thermostat module with 2 valves - Brushed Durabrass (23kt Gold)

MADISON

ST 060 112 0360

8  
—  
10  
—  
16  
—  
18  
—  
19  
—  
19  
—

Required miscellaneous

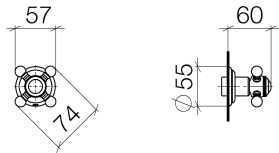
- 
- Wall valve 1/2" -

35 607 970 90

•max. recess depth 145 mm

•min. recess depth 75 mm

ST 060 112 0360



Certificates

DVGW_DW-6501DN0	WRAS_2010	LGA_29	LGA_29	DVGW_DW-6512DN0
WRAS_2011				



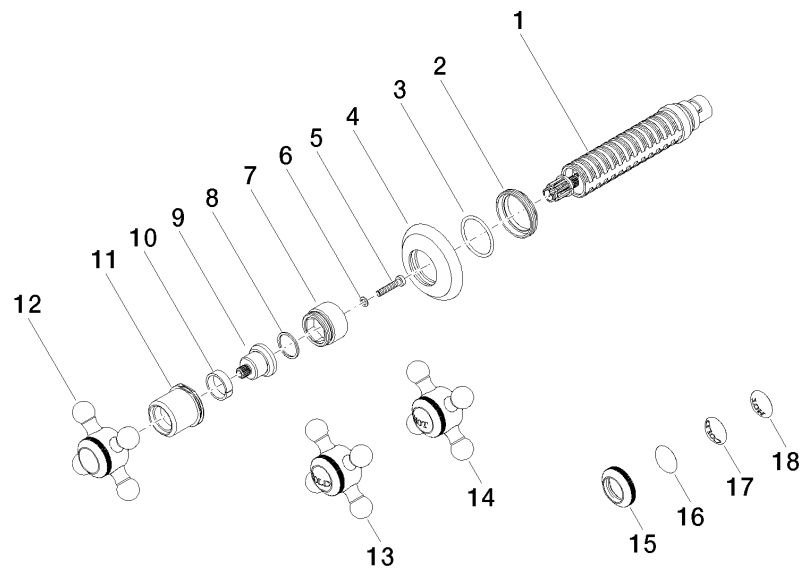
MADISON xTOOL Thermostat module with 2 valves - Brushed Durabrass (23kt Gold)

MADISON

ST 060 112 0360

Codes & Standards

DIN 4109	EN 1111	EN 200	ISO 3822
Scottish Water Byelaws	UK Water Supply Regulations	Ü-Zeichen	





MADISON xTOOL Thermostat module with 2 valves - Brushed Durabrass (23kt Gold)

MADISON

ST 060 112 0360

Spare parts list

No.	Item Number	Name	Quantity used	Delivery time
	90 90 03 143 00 90	top	18	2