

MADISON Three-hole basin mixer with pop-up waste - Brushed Platinum







MADISON

20 700 370 Product version from 7/31/2009



- 135mm projection
- fixed spout
- circular, air-enriched flow
- height of mixer 72 mm
- height up to aerator 40 mm
- hole diameter valve 32 mm
- hole diameter spout 35 mm
- without rosette
- 2x 1/2" x 1/2" high pressure hose
- max. flow 7 l/min
- lead-free
- This product can help a building meet the requirements of Green Building Rating Systems, e.g. LEED®, BREEAM®, DGNB
- WRAS

Only suitable for basins with an overflow.

	Brushed Platinum	20 700 370-06
	Chrome	20 700 370-00
	Platinum	20 700 370-08
	Durabrand (23kt Gold)	20 700 370-09
	Brushed Durabrand (23kt Gold)	20 700 370-28
	Brushed Dark Platinum	20 700 370-99

20 700 370 Product version from 7/31/2009

mm [inches]



Flow rate chart



Codes & Standards

DIN 4109

Executive Order
no. 1007

ISO 3822

Scottish Water
Byelaws

UK Water Supply
Regulations

Ü-Zeichen



MADISON Three-hole basin mixer with pop-up waste - Brushed Platinum

MADISON

20 700 370 Product version from 7/31/2009

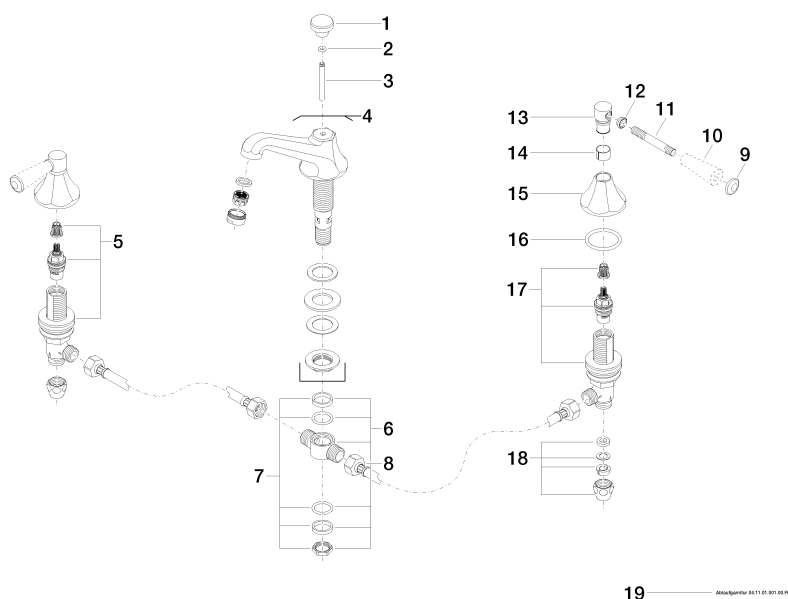
Certificates and sustainability

GDV_0400

LGA_8

WRAS_240602

Parts for other
finishes can be found
here: [Chrome](#)



Spare parts list

No.	Item Number	Name	Quantity used	Delivery time
5	90 17 11 040 51 90	side panel	1.00	2
15	09 27 37 014-06	rosette	2.00	10
12	09 20 37 001-06	handle	2.00	10
11	09 28 22 013 90	pipe	2.00	2
3	09 31 09 004-06	pull-rod	1.00	10
7	90 23 10 012 00 90	gasket kit	1.00	2
13	09 20 82 000-06	handle	2.00	10
9	09 30 30 062-06	screw	2.00	10
8	04 30 04 096 00 90	hose	2.00	2
10	11 170 370-06	MADISON Lever insert - Brushed Platinum	2.00	10
4	13 700 380-06	spout	1.00	10
17	90 17 11 040 50 90	side panel	1.00	2
1	09 20 36 030-06	handle	1.00	10
14	90 18 40 041 00 90	sleeve	2.00	2
2	90 14 10 062 00 90	seal	1.00	2
6	90 17 11 020 10 90	distributor	1.00	2
19	90 11 01 001 00-06	pop-up waste	1.00	10
16	90 14 10 043 00 90	seal	2.00	2
18	90 23 30 040 00-06	threaded connector	2.00	10