

LULU Three-hole basin mixer with pop-up waste - Brushed Platinum



LULU

20 713 710 Product version from 8/31/2015 to 7/22/2021



- 155mm projection
- fixed spout
- circular, air-enriched flow
- height of mixer 114 mm
- height up to aerator 90 mm
- hole diameter valve 32 mm
- hole diameter spout 35 mm
- rosette 47 x 55 mm
- 2x screw-in M 8 x 1 pressure hose, leak-tested
- max. flow 7 l/min
- lead-free
- WRAS
- This product can help a building meet the requirements of Green Building Rating Systems, e.g. LEED®, BREEAM®, DGNB

Only suitable for basins with an overflow.

	Brushed Platinum	20 713 710-06
	Chrome	20 713 710-00

Recommended miscellaneous

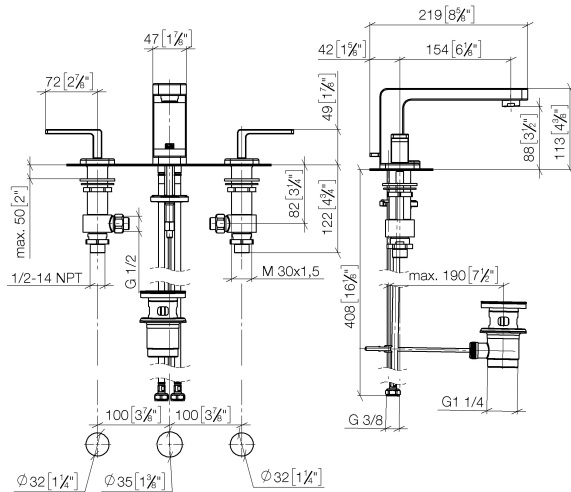


- High pressure hoses -**
 •2x 3/8" x 1/2" x 500mm high pressure hose

12 506 970 90

20 713 710 Product version from 8/31/2015 to 7/22/2021

mm [inches]



Flow rate chart



Codes & Standards

DIN 4109

ISO 3822

Scottish Water
Byelaws

UK Water Supply
Regulations

Ü-Zeichen



LULU Three-hole basin mixer with pop-up waste - Brushed Platinum

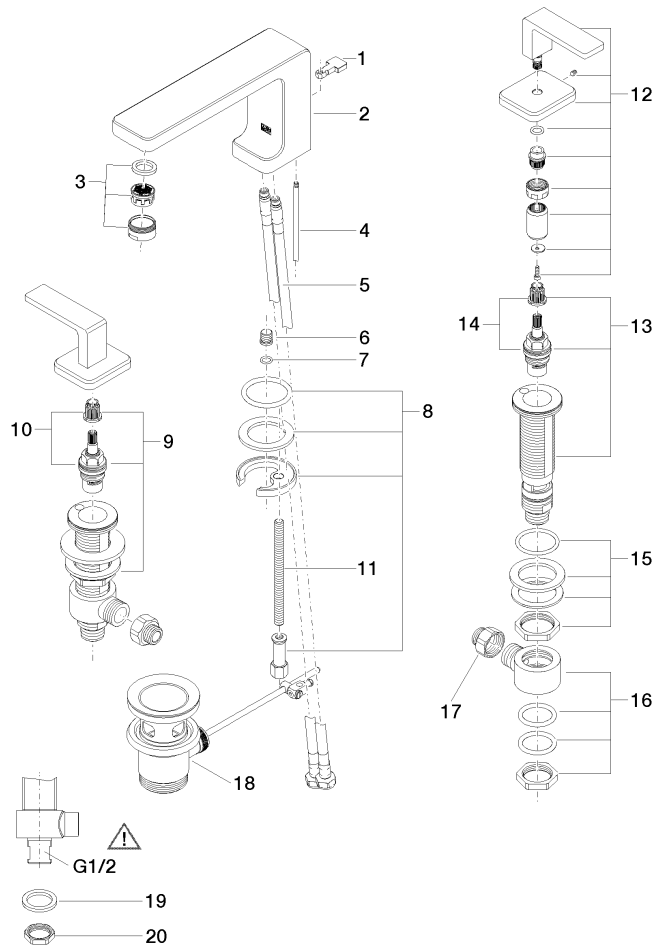
LULU

20 713 710 Product version from 8/31/2015 to 7/22/2021

Certificates and sustainability

LGA_19

WRAS_250402



Spare parts list

No.	Item Number	Name	Quantity used	Delivery time
6	09 31 20 065 90	plug	1.00	2
8	04 30 11 038 75 90	fixing set	1.00	2
2	09 11 71 095 10-06	spout	1.00	10
4	09 31 09 080-06	pull-rod	1.00	10
11	09 31 11 012 90	pin	1.00	2
12	90 20 71 046 01-06	handle	2.00	10
9	04 17 11 058 53 90	side panel	1.00	2
15	04 23 10 032 78 90	fixing set	2.00	2
10	90 90 03 153 00 90	top	1.00	2
1	09 20 71 033-06	handle	1.00	10
13	04 17 11 058 52 90	side panel	1.00	2
16	04 17 11 023 10 90	distributor	2.00	2
14	90 90 03 152 00 90	top	1.00	2
5	04 30 04 100 00 90	hose	2.00	2
3	90 23 01 118 01-06	aerator	1.00	10
17	09 24 03 185-00	nipple	2.00	10
20	09 23 10 012 90	nut	2.00	2
19	09 30 11 059 90	disc	2.00	2
7	90 14 10 060 00 90	seal	1.00	2
18	90 11 01 001 00-06	pop-up waste	1.00	10