

25 100 892



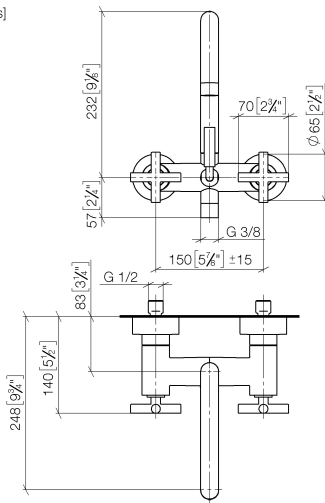
- 240mm projection
- circular normal flow
- rotary diverter for bath/shower
- 3/8" shower outlet
- slide-on rosettes Ø 65 mm
- 1/2" connection
- gauge 150 mm - 15 mm
- max. flow 22 l/min at 3 bar flow pressure
- WRAS

Intrinsic protection against back flow.

Stand pipes combination possible on request  
(special production).

25 100 892

mm [inches]



### Flow rate chart



### Codes & Standards

EN 1717

Scottish Water  
Byelaws

UK Water Supply  
Regulations



## TARA Bath mixer for wall mounting - Matte Black

---

TARA

25 100 892

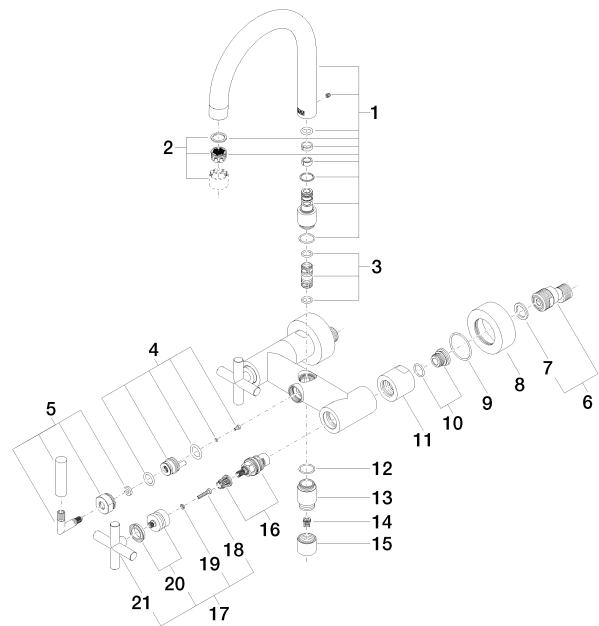
Certificates and sustainability

---

WRAS\_2210

Belgaqua\_21-026-2

25 100 892



## Spare parts list

No.	Item Number	Name	Quantity used	Delivery time
9	09 14 10 034 90	seal	2.00	2
21	09 20 89 010-33	handle	2.00	60
20	90 12 12 007 00-33	base	2.00	30
15	09 21 02 143-33	sleeve	1.00	30
4	90 15 01 005 00 90	insert	1.00	2
14	09 23 01 131 90	back-flow preventer	1.00	2
11	09 23 10 064-33	nut	2.00	30
7	09 14 20 010 90	seal	2.00	2
5	90 18 20 025 00-33	diverter	1.00	-
Spare part can no longer be ordered, please order the replacement item				
16	90 90 03 131 00 90	top	2.00	2
3	90 21 10 011 00 90	diverter	1.00	2
13	09 24 03 121-33	nipple	1.00	30
10	04 29 05 014 00 90	nipple	2.00	2
8	09 27 89 103-33	rosette	2.00	30
6	04 11 04 030 00 90	connection	2.00	2
2	90 23 01 024 00-33	aerator	1.00	30
1	90 28 22 219 00-33	spout	1.00	-
Spare part can no longer be ordered, please order the replacement item				
18	90 30 30 075 00 90	screw	2.00	2
17	90 20 89 010 10-33	handle	2.00	30
12	90 14 10 032 00 90	seal	1.00	2
19	90 30 11 029 00 90	disc	2.00	2