


CL.1 Single-lever bath mixer with stand pipe for free-standing assembly with hand shower set - Brushed Champagne (22kt Gold)

CL.1

25 863 705 Product version from 7/1/2023



- 238mm projection
- rectangular spray pattern with 55 individual jets
- max. spout flow rate 24.6 l/min
- Hand shower: COMPACT RAIN, max. flow rate 6.8 l/min (at 3 bar)
- bar-type hand shower with anti-scale system
- wall bracket
- automatic bath/shower diverter
- total height 935 - 1005 mm
- stand pipe height 598 - 668 mm
- height up to aerator 852 – 922 mm
- push-on rosette 131 x 131 mm
- metal shower hose 1250mm with integrated anti-twist protection

	Brushed Champagne (22kt Gold)	25 863 705-46
	Chrome	25 863 705-00
	Brushed Platinum	25 863 705-06
	Dark Chrome	25 863 705-19
	Champagne (22kt Gold)	25 863 705-47
	Brushed Dark Platinum	25 863 705-99

CL.1 Single-lever bath mixer with stand pipe for free-standing assembly with hand shower set - Brushed Champagne (22kt Gold)

CL.1

25 863 705 Product version from 7/1/2023

mm [inches]



Flow rate chart



Codes & Standards

ASME A112.18.1

cUPC

EN 1717



CL.1 Single-lever bath mixer with stand pipe for free-standing assembly with hand shower set - Brushed Champagne (22kt Gold)

CL.1

25 863 705 Product version from 7/1/2023

Certificates and sustainability

IAPMO_4976

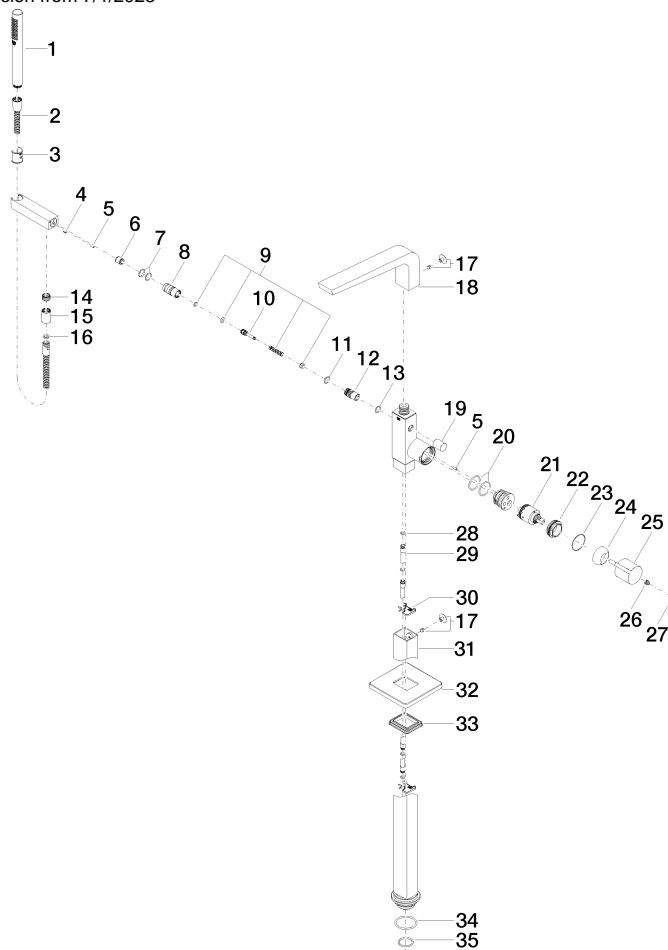
Belgaqua_24-003-2

CL.1 Single-lever bath mixer with stand pipe for free-standing assembly with hand shower set - Brushed Champagne (22kt Gold)

CL.1

25 863 705 Product version from 7/1/2023

Parts for other
finishes can be found
here: [Chrome](#)





CL.1 Single-lever bath mixer with stand pipe for free-standing assembly with hand shower set - Brushed Champagne (22kt Gold)

CL.1

25 863 705 Product version from 7/1/2023

Spare parts list

No.	Item Number	Name	Quantity used	Delivery time
8	09 24 03 130-00	nipple	1.00	10
2	90 30 02 072 00-46	Metal shower hose 1/2" x 3/8" x 1250 mm - Brushed Champagne (22kt Gold)	1.00	30
32	09 27 71 011-46	rosette	1.00	60
18	90 11 70 008 00-46	spout	1.00	30
14	09 24 03 069 90	nipple	1.00	2
24	09 28 30 036-46	cover	1.00	30
25	09 20 67 014-46	handle	1.00	60
23	09 14 10 037 90	seal	1.00	2
12	09 21 34 080-46	nipple	1.00	60
15	90 21 02 069 00-46	cover	1.00	30
6	90 23 01 141 00 90	back-flow preventer	1.00	2
34	09 14 10 084 90	seal	1.00	2
11	90 14 10 055 00 90	seal	1.00	2
30	09 20 93 051 90	holder	2.00	2
31	04 28 22 024 00-46	pipe	1.00	60
5	09 31 11 040 90	pin	3.00	2
19	09 20 71 031-46	handle	1.00	60
20	09 14 10 148 90	seal	2.00	2
21	90 15 05 039 00 90	cartridge	1.00	2
16	90 14 20 026 00 90	seal	1.00	2
22	09 24 04 298 90	nut	1.00	2
28	09 14 10 139 90	seal	2.00	2
7	90 14 10 010 00 90	seal	2.00	2
9	90 16 02 023 00 90	spring	1.00	2
3	09 18 40 118 90	sleeve	1.00	2
35	09 14 10 018 90	seal	1.00	2
13	90 14 10 033 00 90	seal	1.00	2
4	09 31 11 058 90	pin	1.00	2
17	04 31 20 034 00 90	plug	2.00	2
27	90 31 20 087 00-46	plug	1.00	30
26	90 31 11 030 00 90	pin	1.00	2
10	09 31 09 094 20-46	pull-rod	1.00	60
29	04 28 22 025 00 90	connection	2.00	2
33	09 14 03 107 90	seal	1.00	2
1	90 12 11 140 41-46	shower	1.00	30