

## Single-lever bath mixer with cascade spout for free-standing assembly with hand shower set - Brushed Platinum

SERIES SPECIFIC

25 963 979 Product version from 3/10/2014 to 5/27/2021



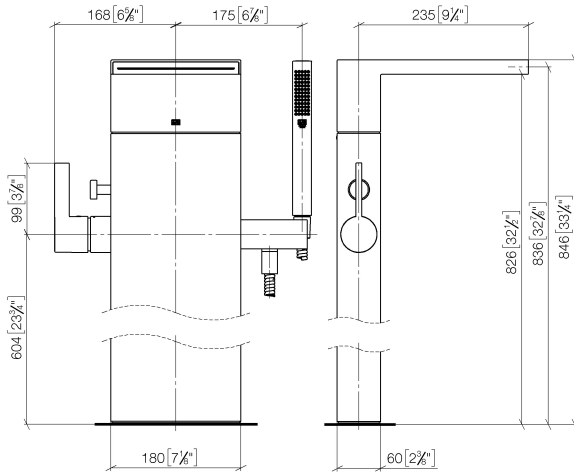
- 235mm projection
- spout: cascade
- complete hand shower set: normal flow
- complete hand shower set with anti-scale system
- wall bracket
- automatic bath/shower diverter
- total height 845 mm
- height up to single-lever mixer 604mm
- height up to aerator 835 mm
- metal shower hose 1250mm with integrated anti-twist protection
- max. spout flow rate 26.5 l/min
- max. flow for complete hand shower set 6.8 l/min

The stand pipe is black.

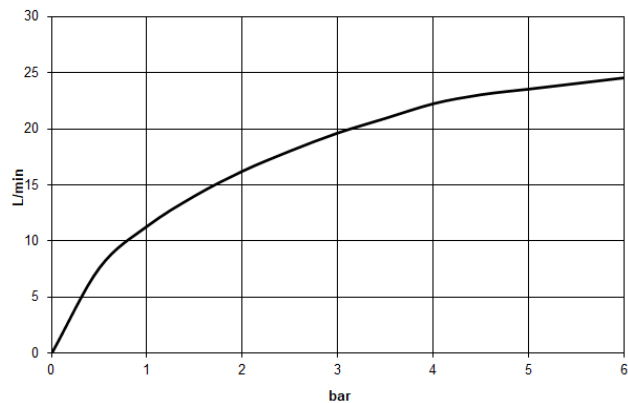
# Single-lever bath mixer with cascade spout for free-standing assembly with hand shower set - Brushed Platinum

SERIES SPECIFIC

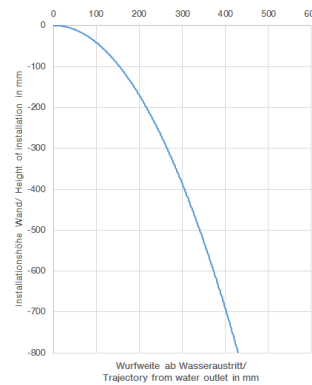
25 963 979 Product version from 3/10/2014 to 5/27/2021  
mm [inches]



Flow rate chart



Trajectory diagram



## Codes & Standards

DIN 4109

EN 1717

ISO 3822

Ü-Zeichen



## Single-lever bath mixer with cascade spout for free-standing assembly with hand shower set - Brushed Platinum

---

SERIES SPECIFIC

25 963 979 Product version from 3/10/2014 to 5/27/2021

Certificates and sustainability

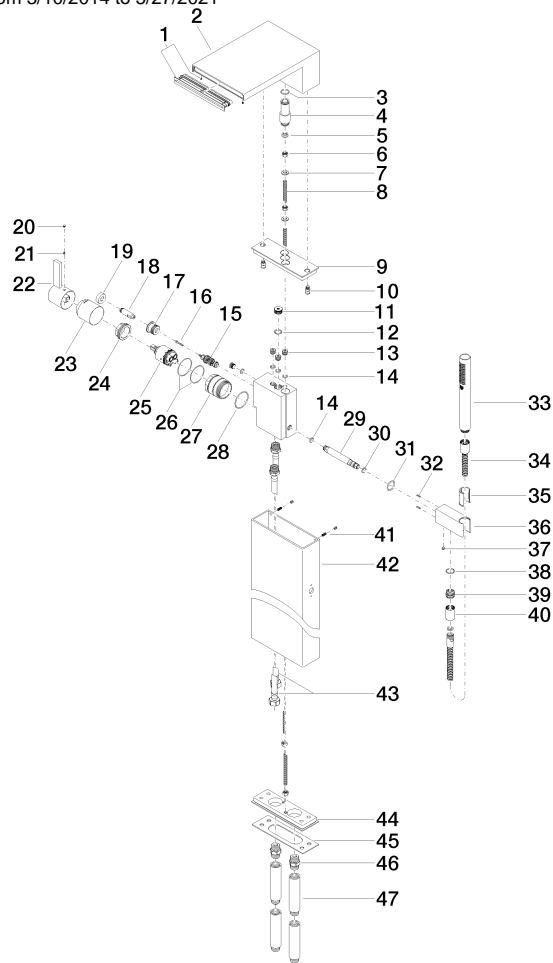
---

Belgaqua\_21-025-2 LGA\_28

# Single-lever bath mixer with cascade spout for free-standing assembly with hand shower set - Brushed Platinum

SERIES SPECIFIC

25 963 979 Product version from 3/10/2014 to 5/27/2021



# Single-lever bath mixer with cascade spout for free-standing assembly with hand shower set - Brushed Platinum

SERIES SPECIFIC

25 963 979 Product version from 3/10/2014 to 5/27/2021

## Spare parts list

| No.  | Item Number        | Name   | Quantity used | Delivery time |
|--|--------------------|--|---------------|---------------|
| 32   | 09 31 11 026 90    | pin  | 2.00          | 2             |
| 24   | 09 24 04 448 90    | nut  | 1.00          | 2             |
| 18   | 09 31 09 141-06    | pull-rod   | 1.00          | 10            |
| 39   | 09 24 03 117-06    | nipple   | 1.00          | 10            |
| 31   | 09 14 10 015 90    | seal   | 1.00          | 2             |
| 28   | 09 14 10 210 90    | seal   | 1.00          | 2             |
| 29   | 09 24 03 246 90    | nipple   | 1.00          | 2             |
| 2  | 09 11 74 040-06    | spout  | 1.00          | 10            |
| 8  | 09 30 60 026 90    | bar  | 2.00          | 2             |
| 19   | 09 20 78 056-06    | handle   | 1.00          | 10            |
| 7  | 09 30 11 045 90    | disc   | 2.00          | 2             |
| 36   | 09 11 03 122 20-06 | holder   | 1.00          | 10            |
| 9  | 09 11 02 291-33    | plate  | 1.00          | 30            |
| 34   | 90 30 02 072 00-06 | Metal shower hose 1/2" x 3/8" x 1250 mm - Brushed Platinum | 1.00          | 10            |
| 26   | 09 14 10 201 90    | seal   | 2.00          | 2             |
| 22   | 09 20 67 007-06    | handle   | 1.00          | 10            |
| 13   | 09 31 20 039 10 90 | plug   | 4.00          | 60            |
| 42   | 09 28 22 264-33    | pipe   | 1.00          | 30            |
| 23   | 09 11 02 295-06    | cover  | 1.00          | 10            |
| 4  | 09 24 03 251 90    | nipple   | 1.00          | 2             |
| 47   | 09 24 03 169 10 90 | adaptor  | 4.00          | 2             |
| 44   | 09 11 02 290-33    | plate  | 1.00          | 30            |
| 27   | 09 17 01 209 90    | sleeve   | 1.00          | 2             |
| 6  | 09 23 10 023 90    | nut  | 4.00          | 2             |
| 25   | 90 15 05 039 00 90 | cartridge  | 1.00          | 2             |
| 10   | 09 24 05 011 90    | nipple   | 2.00          | 2             |
| 33   | 28 019 979-06      | Hand shower - Brushed Platinum                             | 1.00          | -             |
| Spare part can no longer be ordered, please order the replacement item |                    |  |               |               |
| 30   | 09 14 10 008 90    | seal   | 1.00          | 2             |
| 17   | 09 17 01 210-33    | sleeve   | 1.00          | 30            |
| 5  | 09 23 01 057 90    | flow reducer   | 1.00          | 2             |
| 15   | 90 21 34 081 00 90 | diverter   | 1.00          | 2             |
| 41   | 09 31 11 024 90    | pin  | 2.00          | 2             |
| 21   | 09 31 11 099 90    | pin  | 1.00          | 2             |
| 11   | 09 31 20 098 90    | plug   | 1.00          | 2             |
| 35   | 09 18 40 078 90    | sleeve   | 1.00          | 2             |
| 43   | 04 30 04 049 00 90 | hose   | 2.00          | 2             |
| 1  | 90 29 03 059 00 90 | insert   | 1.00          | 2             |
| 16   | 09 30 30 172 90    | screw  | 1.00          | 2             |
| 45   | 09 14 03 154 90    | seal   | 1.00          | 2             |
| 14   | 09 14 10 139 90    | seal   | 5.00          | 2             |
| 12   | 90 14 10 055 00 90 | seal   | 1.00          | 2             |
| 38   | 90 14 10 032 00 90 | seal   | 1.00          | 2             |
| 3  | 90 14 10 010 00 90 | seal   | 2.00          | 2             |
| 40   | 90 21 02 069 00-06 | cover  | 1.00          | 10            |
| 37   | 90 31 11 004 00 90 | pin  | 1.00          | 2             |
| 20   | 90 31 20 109 00 90 | plug   | 1.00          | 2             |
| 46   | 90 24 03 168 00 90 | nipple   | 2.00          | 2             |