

CYO Five-hole bath mixer for bath rim or tile edge installation - Brushed Platinum






CYO

27 523 811 Product version from 7/1/2023



- 167mm projection
- rectangular, air-enriched flow
- height of mixer 198 mm
- height up to aerator 133 mm
- Hand shower: COMPACT RAIN, max. flow rate 6.8 l/min (at 3 bar)
- complete hand shower set with anti-scale system
- hole diameter spout 32 mm
- hole diameter valve 32 mm
- rosette for complete hand shower set 60 x 60mm
- handle Ø 60mm
- metal shower hose 1750mm with integrated anti-twist protection
- max. flow 23.8 l/min at 3 bar flow pressure
- WRAS

NOTE: The handle inserts must be ordered separately from the fittings!

| | | |
|---|-------------------------------|---------------|
|  | Brushed Platinum | 27 523 811-06 |
|  | Chrome | 27 523 811-00 |
|  | Dark Chrome | 27 523 811-19 |
|  | Brushed Durabrass (23kt Gold) | 27 523 811-28 |
|  | Brushed Dark Platinum | 27 523 811-99 |

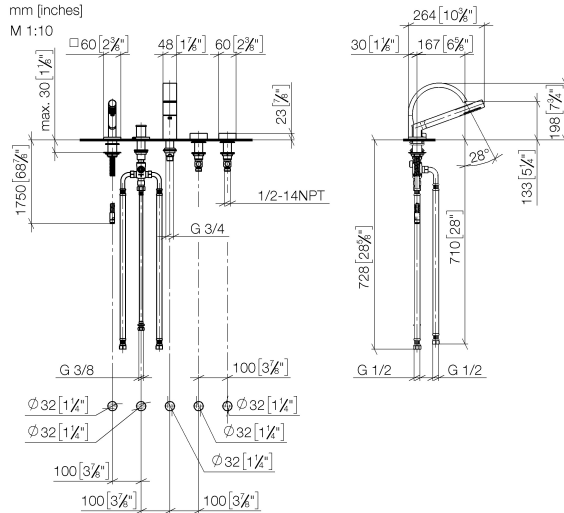
CYO Five-hole bath mixer for bath rim or tile edge installation - Brushed Platinum

CYO

27 523 811 Product version from 7/1/2023

mm [inches]

M 1:10



Flow rate chart



Codes & Standards

| | | | |
|----------------|------------------------|-----------------------------|-----------|
| ASME A112.18.1 | cUPC | DIN 4109 | EN 1717 |
| ISO 3822 | Scottish Water Byelaws | UK Water Supply Regulations | Ü-Zeichen |



CYO Five-hole bath mixer for bath rim or tile edge installation - Brushed Platinum

CYO

27 523 811 Product version from 7/1/2023

Certificates and sustainability

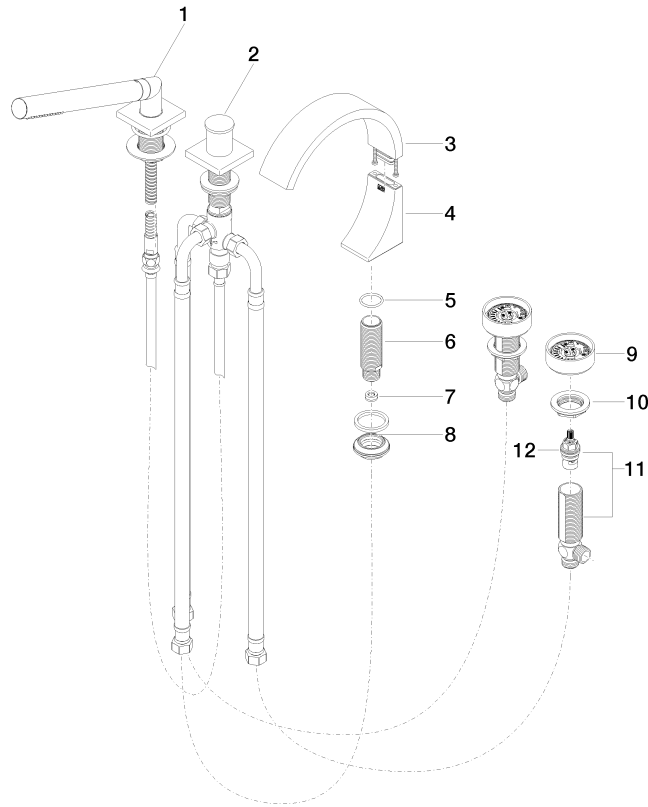
| | | | |
|------------|-----------|--------|-------------------|
| IAPMO_4976 | WRAS_2204 | LGA_38 | Belgaqua_21-380-2 |
|------------|-----------|--------|-------------------|

CYO Five-hole bath mixer for bath rim or tile edge installation - Brushed Platinum

CYO

27 523 811 Product version from 7/1/2023

Parts for other
finishes can be found
here: [Chrome](#)



Spare parts list

| No. | Item Number | Name | Quantity used | Delivery time |
|-----|--------------------|---|---------------|---------------|
| 6 | 09 30 01 117 90 | connection | 1.00 | 2 |
| 1 | 27 702 980-06 | Hand shower set for bath rim or tile edge installation - Brushed Platinum | 1.00 | 10 |
| 2 | 29 140 670-06 | Two-way diverter for bath rim or tile edge installation - Brushed Platinum | 1.00 | 10 |
| 11 | 04 17 11 055 41 90 | side panel | 2.00 | 2 |
| 5 | 09 14 10 009 90 | seal | 1.00 | 2 |
| 12 | 90 90 03 239 00 90 | top | 2.00 | 2 |
| 10 | 04 30 11 038 68 90 | fixing set | 1.00 | 2 |
| 4 | 90 19 70 011 00-06 | connection | 1.00 | 10 |
| 9 | 90 18 40 291 01-06 | handle | 2.00 | 10 |
| 8 | 04 23 10 044 09 90 | fixing set | 1.00 | 2 |
| 3 | 90 11 70 013 00-06 | spout | 1.00 | 10 |
| 7 | 09 23 01 057 90 | flow reducer | 1.00 | 2 |