

Hand shower set for bath rim or tile edge installation - Platinum

SERIES SPECIFIC

27 702 980 Product version up to 5/15/2020



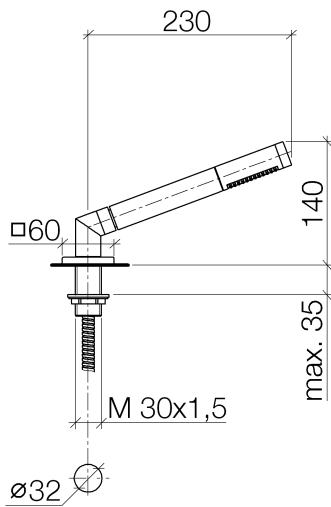
- COMPACT RAIN, max. flow rate 6.8 l/min (at 3 bar)
- with anti-scale system
- rosette 60 x 60 mm
- hole diameter 32 mm
- metal shower hose 1750mm with integrated anti-twist protection
- WRAS

Two-piece design allows hose to later be changed without dismantling the fitting.

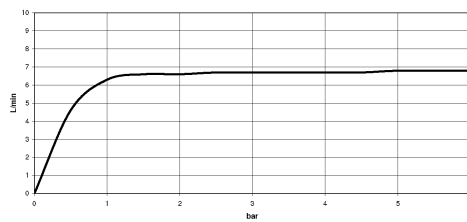
Intrinsic protection against back flow.

	Platinum	27 702 980-08
	Chrome	27 702 980-00
	Brushed Platinum	27 702 980-06
	Dark Chrome	27 702 980-19
	Brushed Light Gold	27 702 980-27
	Brushed Durabrass (23kt Gold)	27 702 980-28
	Matte Black	27 702 980-33
	Brushed Champagne (22kt Gold)	27 702 980-46
	Champagne (22kt Gold)	27 702 980-47
	Brushed Chrome	27 702 980-93
	Brushed Dark Platinum	27 702 980-99

27 702 980 Product version up to 5/15/2020



Flow rate chart



Codes & Standards

ASME A112.18.1	cUPC	DIN 4109	EN 1717
ISO 3822	Scottish Water Byelaws	UK Water Supply Regulations	Ü-Zeichen



Hand shower set for bath rim or tile edge installation - Platinum

SERIES SPECIFIC

27 702 980 Product version up to 5/15/2020

Certificates and sustainability

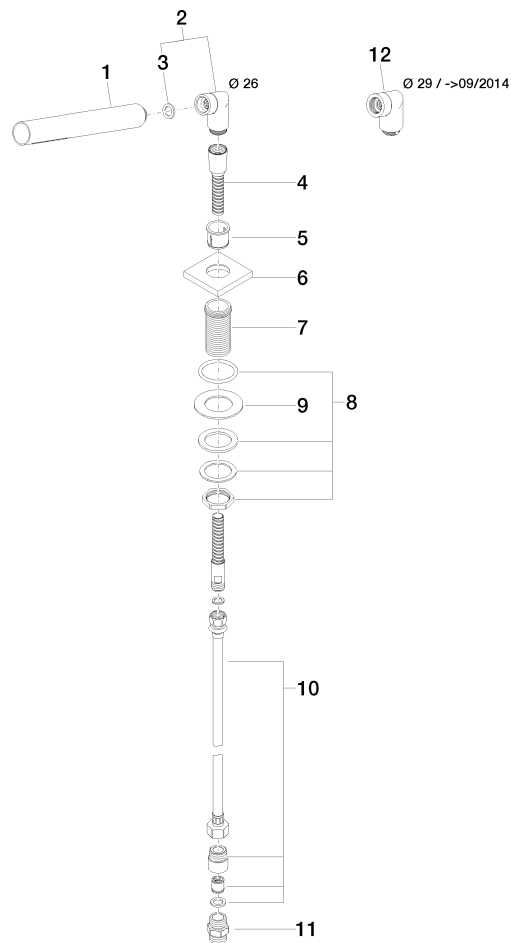
LGA_29 IAPMO_4976 Belgaqua_21-383-2 WRAS_2209

Hand shower set for bath rim or tile edge installation - Platinum

SERIES SPECIFIC

27 702 980 Product version up to 5/15/2020

Parts for other
finishes can be found
here: [Chrome](#)



Spare parts list

No.	Item Number	Name	Quantity used	Delivery time
	9 09 30 11 060 90	disc	1.00	2
	2 04 24 04 287 00-08	nipple	1.00	40
	8 04 23 10 032 46 90	fixing set	1.00	2
	10 12 505 970 90	High pressure hose 1/2" x 3/8" x 500 mm -	1.00	2
	7 09 30 01 090-07	sleeve	1.00	30
	6 09 27 68 003-08	rosette	1.00	40
	12 04 24 04 187 00-08	nipple	1.00	40
	5 90 18 40 085 00 90	sleeve	1.00	2
	3 90 14 20 002 00 90	seal	1.00	2
	11 90 24 03 168 00 90	nipple	1.00	2
	1 90 12 11 140 41-08	shower	1.00	40
	4 28 322 970-08	Metal shower hose 1/2" x 3/8" x 1750 mm - Platinum	1.00	40