



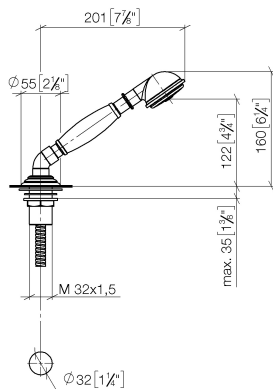
- spray head Ø 64mm
- normal flow
- with anti-scale system
- rosette Ø 55 mm
- hole diameter 32 mm
- metal shower hose 1750mm with integrated anti-twist protection
- max. flow 6.8 l/min
- WRAS

Two-piece design allows hose to later be changed without dismantling the fitting.

Intrinsic protection against back flow.

27 703 360 Product version up to 5/15/2020

mm [inches]



Flow rate chart



Codes & Standards

ASME A112.18.1

cUPC

EN 1717



MADISON Hand shower set for bath rim or tile edge installation - Chrome

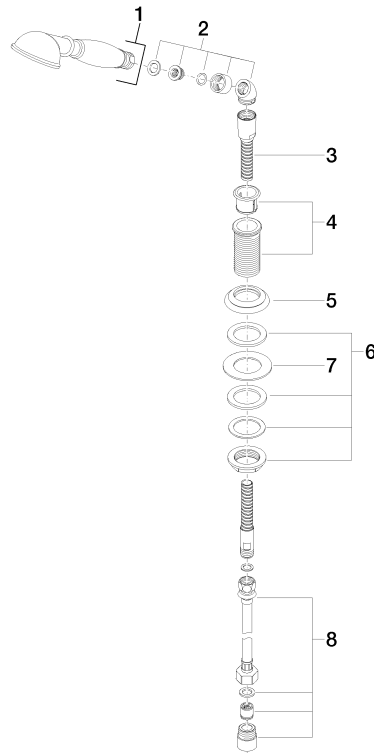
MADISON

27 703 360 Product version up to 5/15/2020

Certificates and sustainability

IAPMO_4976

Belgaqua_21-383-2



Spare parts list

No.	Item Number	Name	Quantity used	Delivery time
3	28 322 970-00	Metal shower hose 1/2" x 3/8" x 1750 mm - Chrome	1.00	2
6	04 23 10 009 00 90	fixing set	1.00	2
8	12 505 970 90	High pressure hose 1/2" x 3/8" x 500 mm -	1.00	2
5	09 27 35 002-00	rosette	1.00	10
7	09 30 11 060 90	disc	1.00	2
4	04 24 04 018 00-00	sleeve	1.00	10
1	28 002 970-00	MADISON Metal hand shower with porcelain insert (white) - Chrome	1.00	10
2	90 24 04 019 00-00	angle	1.00	10