

## MADISON Hand shower set for bath rim or tile edge installation - Durabrass (23kt Gold)

---

MADISON

27 703 360 Product version up to 5/15/2020



- spray head Ø 64mm
- normal flow
- with anti-scale system
- rosette Ø 55 mm
- hole diameter 32 mm
- metal shower hose 1750mm with integrated anti-twist protection
- max. flow 6.8 l/min
- WRAS

Two-piece design allows hose to later be changed without dismantling the fitting.

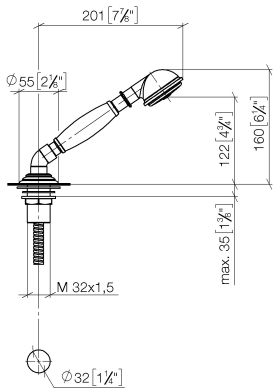
Intrinsic protection against back flow.



MADISON Hand shower set for bath rim or tile edge installation - Durabrass  
(23kt Gold)

MADISON

27 703 360 Product version up to 5/15/2020  
mm [inches]



Flow rate chart



Codes & Standards

ASME A112.18.1 cUPC EN 1717



## MADISON Hand shower set for bath rim or tile edge installation - Durabrass (23kt Gold)

MADISON

---

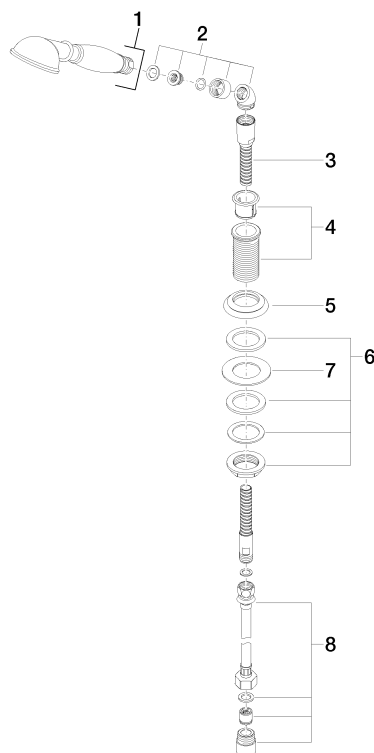
27 703 360 Product version up to 5/15/2020

Certificates and sustainability

---

IAPMO\_4976

Belgaqua\_21-383-2



## Spare parts list

No.	Item Number	Name	Quantity used	Delivery time
7	09 30 11 060 90	disc	1.00	2
3	28 322 970-09	Metal shower hose 1/2" x 3/8" x 1750 mm - Durabrass (23kt Gold)	1.00	40
8	12 505 970 90	High pressure hose 1/2" x 3/8" x 500 mm -	1.00	2
4	04 24 04 018 00-09	sleeve	1.00	40
6	04 23 10 009 00 90	fixing set	1.00	2
5	09 27 35 002-09	rosette	1.00	40
1	28 002 970-09	MADISON Metal hand shower with porcelain insert (white) - Durabrass (23kt Gold)	1.00	40
2	90 24 04 019 00-09	angle	1.00	40