

## VAIA Hand shower set with individual rosettes FlowReduce - Brushed Champagne (22kt Gold)

VAIA

27 808 809 Product version from 4/1/2025



- COMPACT RAIN, max. flow rate 6.8 l/min (at 3 bar)
- 3/8" shower outlet
- metal shower hose 1250mm with integrated anti-twist protection
- with anti-scale system

### Technical data:

- rosette for wall elbow Ø 60mm
- rosette for shower holder Ø 60mm
- 1/2" wall elbow

### Notes:

- WRAS

Intrinsic protection against back flow.

	Brushed Champagne (22kt Gold)	27 808 809-46 0010
	Chrome	27 808 809-00
	Chrome	27 808 809-00 0010
	Brushed Platinum	27 808 809-06
	Brushed Platinum	27 808 809-06 0010
	Platinum	27 808 809-08 0010
	Platinum	27 808 809-08
	Dark Chrome	27 808 809-19 0010
	Brushed Durabronze (23kt Gold)	27 808 809-28 0010
	Brushed Durabronze (23kt Gold)	27 808 809-28
	Brushed Dark Brass	27 808 809-39
	Brushed Dark Brass	27 808 809-39 0010
	Brushed Bronze	27 808 809-42
	Brushed Bronze	27 808 809-42 0010
	Champagne (22kt Gold)	27 808 809-47 0010
	Brushed Dark Platinum	27 808 809-99
	Brushed Dark Platinum	27 808 809-99 0010

### Recommended miscellaneous



#### Concealed wall elbow -

- max. recess depth 163 mm
- min. recess depth 90 mm

35 085 970 90

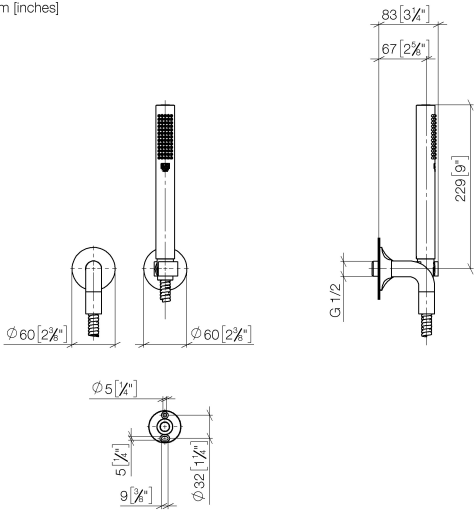


VAIA Hand shower set with individual rosettes FlowReduce - Brushed Champagne (22kt Gold)

VAIA

27 808 809    Product version from 4/1/2025

mm [inches]



Codes & Standards

ASME A112.18.1	cUPC	DIN 4109	ISO 3822
----------------	------	----------	----------

Ü-Zeichen

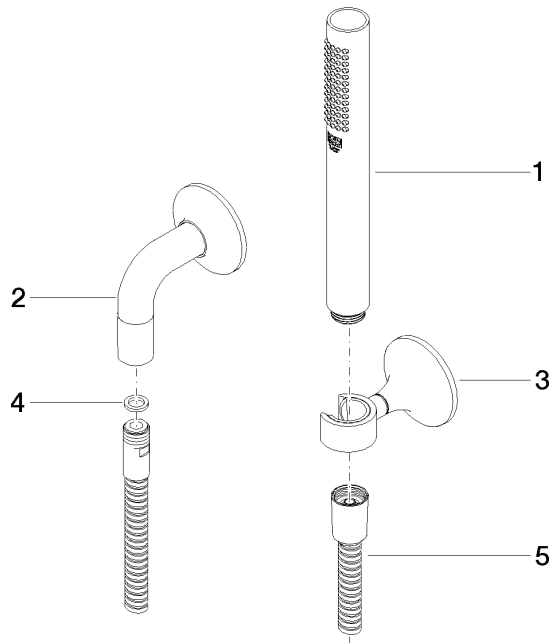
Certificates and sustainability

LGA_29	IAPMO_4976
--------	------------

## VAIA Hand shower set with individual rosettes FlowReduce - Brushed Champagne (22kt Gold)

VAIA

27 808 809 Product version from 4/1/2025



### Spare parts list

No.	Item Number	Name	Quantity used	Delivery time
5	90 30 02 072 00-46	Metal shower hose 1/2" x 3/8" x 1250 mm - Brushed Champagne (22kt Gold)	1.00	30
3	28 050 809-46	VAIA Wall bracket - Brushed Champagne (22kt Gold)	1.00	30
2	28 450 809-46	VAIA Wall elbow - Brushed Champagne (22kt Gold)	1.00	30
4	90 14 20 026 00 90	seal	1.00	2
1	90 12 11 140 41-46	shower	1.00	30