

28 518 710



- spray head Ø 55mm
- ball-joint pivotable through 25° (in any direction)
- rain flow
- anti-scale system
- rosette 78 x 55 mm
- 1/2" connection
- max. flow 5 l/min
- This product can help a building meet the requirements of Green Building Rating Systems, e.g. LEED®, BREEAM®, DGNB



Chrome

28 518 710-00



Brushed Platinum

28 518 710-06

Recommended miscellaneous



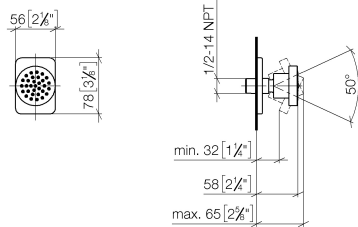
**Concealed wall elbow -**

35 085 970 90

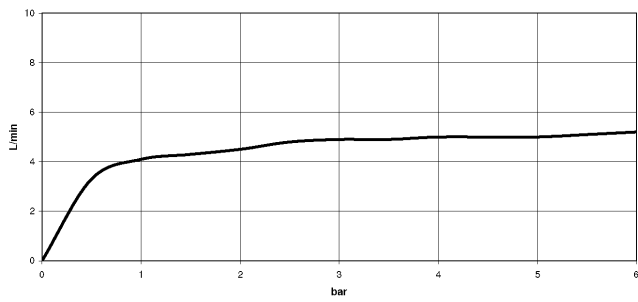
- max. recess depth 163 mm
- min. recess depth 90 mm

28 518 710

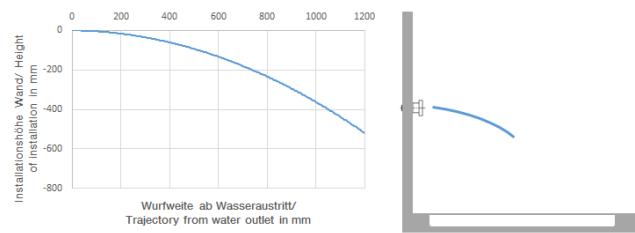
mm [inches]



Flow rate chart



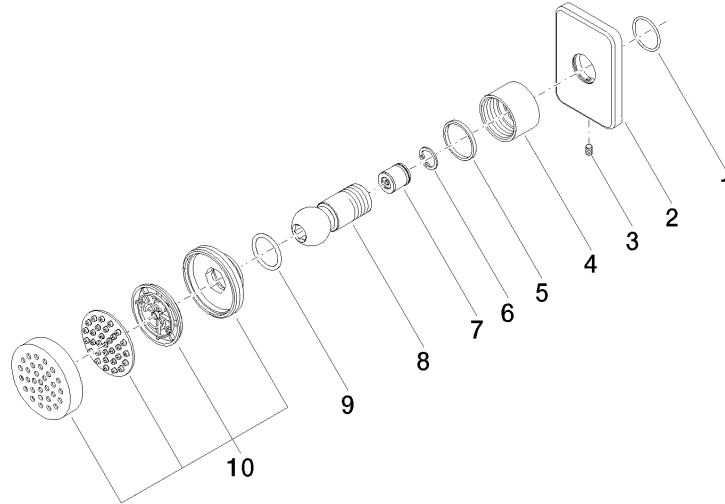
Trajectory diagram



Certificates

IAPMO\_4976 (5). LGA\_38651.

28 518 710



### Spare parts list

| No. | Item Number        | Name                  | Quantity used | Delivery time |
|-----|--------------------|-----------------------|---------------|---------------|
| 1   | 09 14 10 098 90    | seal                  | 1             | 2             |
| 2   | 09 27 71 004-00    | rosette               | 1             | 10            |
| 3   | 09 31 11 048 90    | pin                   | 1             | 2             |
| 4   | 09 23 30 026-00    | nut                   | 1             | 10            |
| 5   | 09 14 15 010 90    | ring                  | 1             | 2             |
| 6   | 09 16 01 014 90    | ring                  | 1             | 2             |
| 7   | 09 23 01 048 90    | back-flow preventer   | 1             | 2             |
| 8   | 09 21 40 016-00    | connection            | 1             | 10            |
| 9   | 09 14 10 015 90    | seal                  | 1             | 2             |
| 10  | 90 12 05 027 00-00 | casing ( completely ) | 1             | 10            |