

Body spray without volume control FlowReduce - Champagne (22kt Gold)

SERIES SPECIFIC

28 518 782 Product version from 3/10/2014



- spray head Ø 55mm
- ball-joint pivotable through 25° (in any direction)
- rain flow
- anti-scale system
- rosette 60 x 60 mm
- 1/2" connection
- max. flow 5 l/min
- WRAS
- This product can help a building meet the requirements of Green Building Rating Systems, e.g. LEED®, BREEAM®, DGNB

	Champagne (22kt Gold)	28 518 782-47
	Chrome	28 518 782-00
	Brushed Platinum	28 518 782-06
	Platinum	28 518 782-08
	Dark Chrome	28 518 782-19
	Brushed Light Gold	28 518 782-27
	Brushed Durabronze (23kt Gold)	28 518 782-28
	Matte Black	28 518 782-33
	Brushed Champagne (22kt Gold)	28 518 782-46
	Brushed Chrome	28 518 782-93
	Brushed Dark Platinum	28 518 782-99

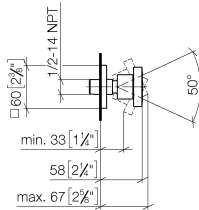
Recommended miscellaneous

Concealed wall elbow -

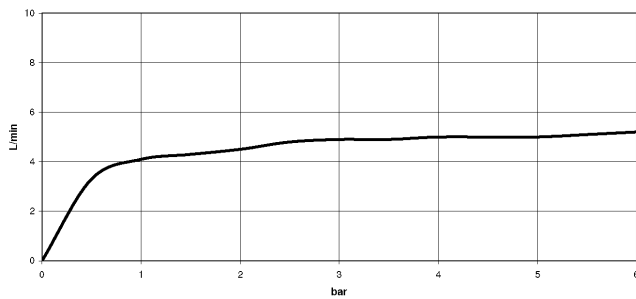
35 085 970 90



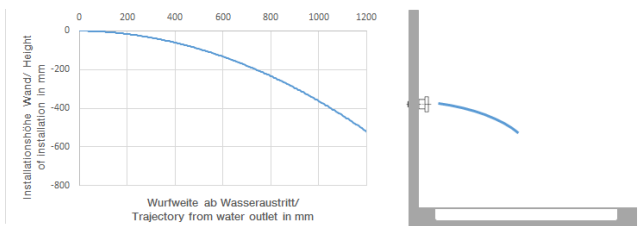
- max. recess depth 163 mm
- min. recess depth 90 mm



Flow rate chart



Trajectory diagram



Codes & Standards

ASME A112.18.1	cUPC	DIN 4109	ISO 3822
Scottish Water Byelaws	UK Water Supply Regulations	Ü-Zeichen	



Body spray without volume control FlowReduce - Champagne (22kt Gold)

SERIES SPECIFIC

28 518 782 Product version from 3/10/2014

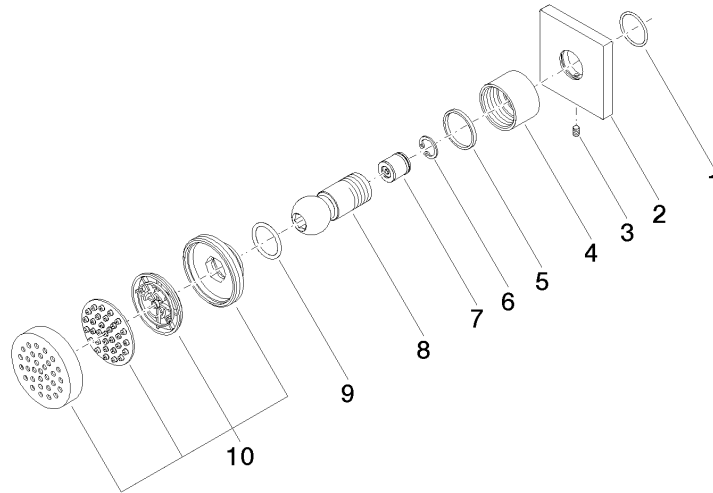
Certificates and sustainability

WRAS_1809

LGA_38

IAPMO_4976

WRAS_240602



Spare parts list

No.	Item Number	Name	Quantity used	Delivery time
10	90 12 05 027 00-47	casing (completely)	1.00	60
2	09 27 98 003-47	rosette	1.00	30
3	09 31 11 048 90	pin	1.00	2
6	09 16 01 014 90	ring	1.00	2
1	09 14 10 098 90	seal	1.00	2
4	09 23 30 026-47	nut	1.00	30
9	09 14 10 015 90	seal	1.00	2
8	09 21 40 016-47	connection	1.00	30
5	09 14 15 010 90	ring	1.00	2
7	09 23 01 048 90	back-flow preventer	1.00	2