

## Two-way diverter - Brushed Platinum

SERIES SPECIFIC

29 126 740

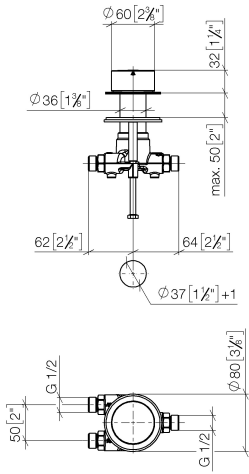


- rotary diverter
- hole diameter 37 mm
- without rosette
- handle Ø 60mm
- 1/2" connection
- max. flow 23.5 l/min at 3 bar flow pressure

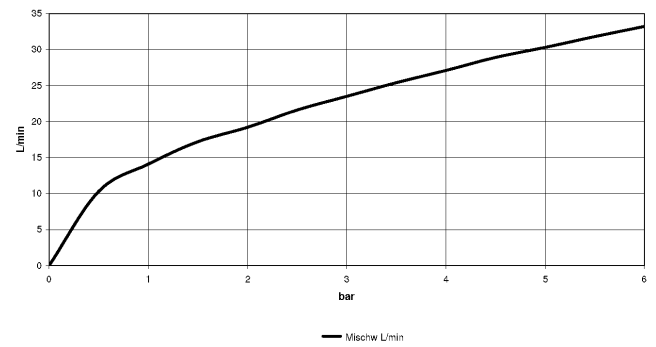
Not suitable for combining with Perfecto (12 614 970 90).

29 126 740

mm [inches]



Flow rate chart



### Codes & Standards

ASME A112.18.1      cUPC      DIN 4109      ISO 3822

### Ü-Zeichen



Two-way diverter - Brushed Platinum

SERIES SPECIFIC

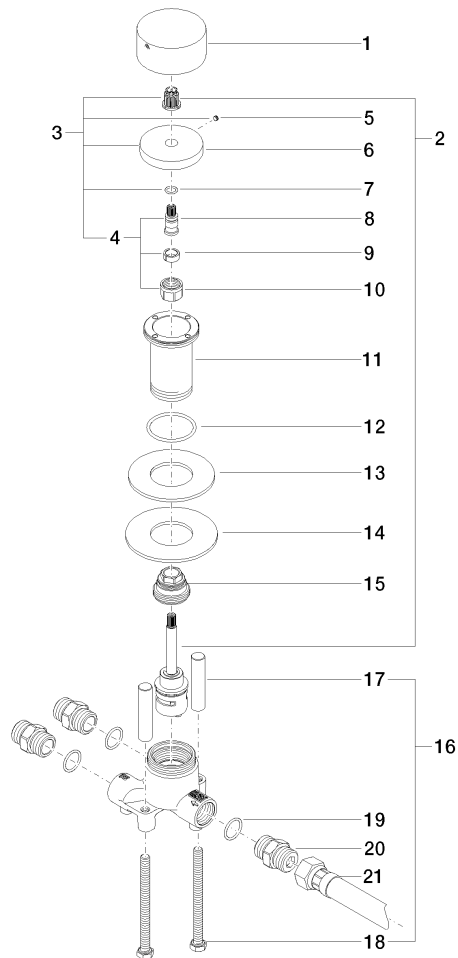
29 126 740

Certificates and sustainability

LGA\_18

IAPMO\_4976

29 126 740





## Two-way diverter - Brushed Platinum

SERIES SPECIFIC

29 126 740

### Spare parts list

No.	Item Number	Name	Quantity used	Delivery time
16	04 30 30 153 00 90	fixing set	1.00	2
6	09 27 74 002-06	rosette	1.00	60
5	09 31 11 055 90	pin	1.00	2
2	90 90 03 161 00 90	diverter	1.00	2
3	04 27 74 002 00-06	rosette	1.00	10
21	12 503 970 90	High pressure hose 1/2" x 1/2" x 600 mm -	1.00	2
13	09 14 05 059 90	seal	1.00	2
1	09 20 74 007-06	handle	1.00	60
11	09 30 01 105 90	sleeve	1.00	2
17	09 18 40 114 90	sleeve	2.00	2
4	04 29 06 020 00-00	spindle	1.00	10
18	09 30 30 153 90	screw	2.00	2
8	09 29 06 020-06	spindle	1.00	-
Spare part can no longer be ordered, please order the replacement item				
12	09 14 10 143 90	seal	1.00	2
15	09 24 04 223 90	nipple	1.00	2
14	09 30 11 136 90	disc	1.00	2
9	90 14 15 020 03 90	ring	1.00	2
10	90 23 30 023 00 90	nut	1.00	2
19	90 14 10 010 00 90	seal	3.00	2
7	90 14 10 060 00 90	seal	1.00	2
20	90 24 03 168 00 90	nipple	3.00	2