

## CL.1 Two-way diverter - Chrome

CL.1

29 127 705 Product version from 3/9/2015



- with WAVES structure
- rotary diverter
- hole diameter 37 mm
- rosette 60 x 60 mm
- 1/2" connection
- max. flow 23.5 l/min at 3 bar flow pressure

**Not suitable for combining with Perfecto (12 614 970 90).**

Not suitable for combining with Perfecto (12 614 970 90).

### Required miscellaneous



**Hose set -**

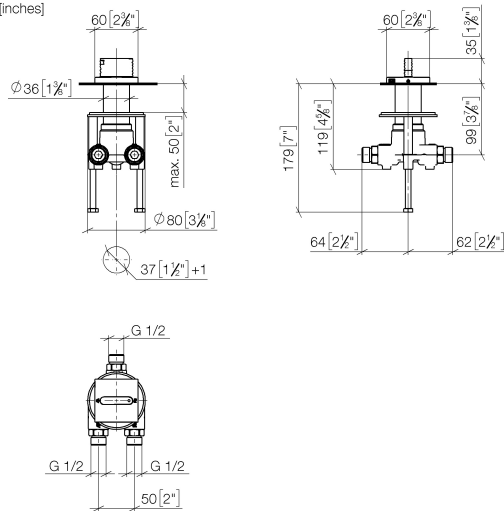
12 509 970 90

## CL.1 Two-way diverter - Chrome

CL.1

29 127 705 Product version from 3/9/2015

mm [inches]



### Flow rate chart



### Codes & Standards

ASME A112.18.1

cUPC

DIN 4109

ISO 3822

### Ü-Zeichen



## CL.1 Two-way diverter - Chrome

CL.1

29 127 705 Product version from 3/9/2015

### Certificates and sustainability

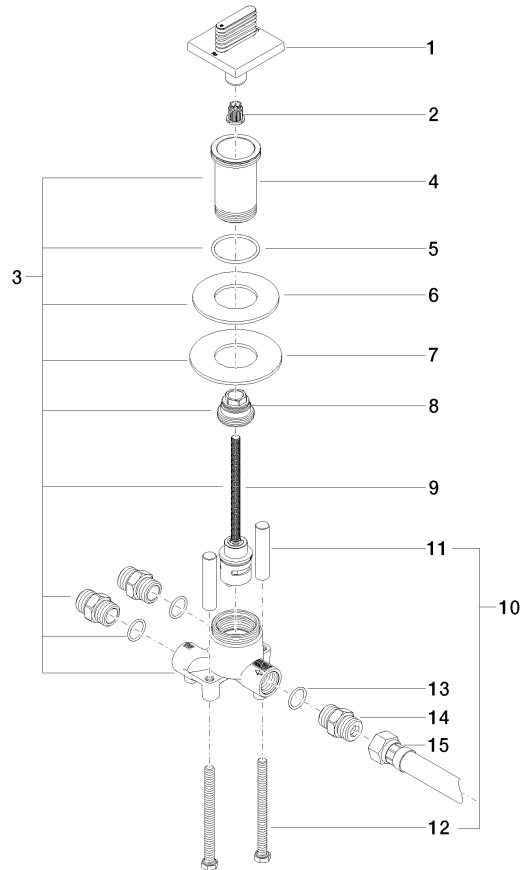
LGA\_18

IAPMO\_4976

## CL.1 Two-way diverter - Chrome

CL.1

29 127 705 Product version from 3/9/2015



### Spare parts list

No.	Item Number	Name	Quantity used	Delivery time
	4 09 30 01 209 90	connection	1.00	2
	1 90 20 70 056 01-00	handle	1.00	10
	12 09 30 30 153 90	screw	2.00	2
	2 90 12 12 002 00 90	fixing cap	1.00	2
	6 09 14 05 059 90	seal	1.00	2
	5 09 14 10 038 90	seal	1.00	2
	11 09 18 40 114 90	sleeve	2.00	2
	3 04 17 01 198 00 90	diverter	1.00	60
	15 12 503 970 90	High pressure hose 1/2" x 1/2" x 600 mm -	1.00	2
	9 90 90 03 159 00 90	diverter	1.00	2
	10 04 30 30 153 00 90	fixing set	1.00	2
	8 09 24 04 223 90	nipple	1.00	2
	7 09 30 11 136 90	disc	1.00	2
	13 90 14 10 010 00 90	seal	3.00	2
	14 90 24 03 168 00 90	nipple	3.00	2