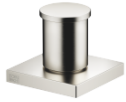


## Two-way diverter for bath rim or tile edge installation - Brushed Platinum

SERIES SPECIFIC

29 140 670 Product version from 6/30/2015



- automatic bath/shower diverter
- hole diameter 32 mm
- rosette 60 x 60 mm
- 1/2" connection
- max. flow 64.9 l/min at 3 bar flow pressure
- WRAS

	Brushed Platinum	29 140 670-06
	Chrome	29 140 670-00
	Platinum	29 140 670-08
	Dark Chrome	29 140 670-19
	Brushed Light Gold	29 140 670-27
	Brushed Durabronze (23kt Gold)	29 140 670-28
	Matte Black	29 140 670-33
	Brushed Champagne (22kt Gold)	29 140 670-46
	Champagne (22kt Gold)	29 140 670-47
	Brushed Chrome	29 140 670-93
	Brushed Dark Platinum	29 140 670-99

2/4 5/9/2025



Two-way diverter for bath rim or tile edge installation - Brushed Platinum

SERIES SPECIFIC

---

29 140 670    Product version from 6/30/2015

Certificates and sustainability

---

WRAS\_1911

LGA\_29

IAPMO\_4976

