

## Two-way diverter for bath rim or tile edge installation - Brushed Platinum

SERIES SPECIFIC

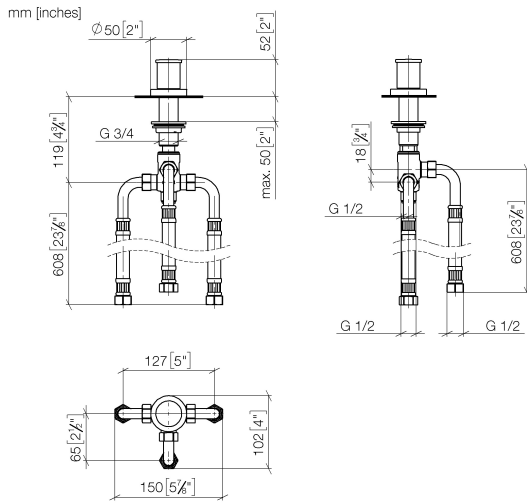
29 140 979 Product version from 6/30/2015



- automatic bath/shower diverter
- hole diameter 32 mm
- rosette Ø 50 mm
- 1/2" connection
- max. flow 64.9 l/min at 3 bar flow pressure
- WRAS

|   |                                     |               |
|---|-------------------------------------|---------------|
|    | Brushed Platinum                    | 29 140 979-06 |
|    | Chrome                              | 29 140 979-00 |
|    | Platinum                            | 29 140 979-08 |
|    | Dark Chrome                         | 29 140 979-19 |
|    | Brushed Durabrass<br>(23kt Gold)    | 29 140 979-28 |
|    | Matte Black                         | 29 140 979-33 |
|    | Brushed Dark<br>Brass               | 29 140 979-39 |
|    | Brushed Bronze                      | 29 140 979-42 |
|    | Brushed<br>Champagne (22kt<br>Gold) | 29 140 979-46 |
|   | Champagne (22kt<br>Gold)            | 29 140 979-47 |
|  | Brushed Chrome                      | 29 140 979-93 |
|  | Brushed Dark<br>Platinum            | 29 140 979-99 |

29 140 979 Product version from 6/30/2015



Flow rate chart



## Codes & Standards

DIN 4109

ISO 3822

Scottish Water  
Byelaws

UK Water Supply  
Regulations

Ü-Zeichen



## Two-way diverter for bath rim or tile edge installation - Brushed Platinum

SERIES SPECIFIC

29 140 979 Product version from 6/30/2015

### Certificates and sustainability

WRAS\_1911

LGA\_29

## Two-way diverter for bath rim or tile edge installation - Brushed Platinum

SERIES SPECIFIC

29 140 979 Product version from 6/30/2015

Parts for other  
finishes can be found  
here: [Chrome](#)



### Spare parts list

| No. | Item Number        | Name     | Quantity used | Delivery time |
|-----|--------------------|----------|---------------|---------------|
| 9   | 09 23 10 004 90    | nut      | 1.00          | 2             |
| 7   | 09 14 05 014 90    | seal     | 1.00          | 2             |
| 4   | 09 16 01 012-06    | ring     | 1.00          | 10            |
| 3   | 09 20 71 002-06    | handle   | 1.00          | 10            |
| 2   | 90 30 30 014 00 90 | screw    | 1.00          | 2             |
| 1   | 09 20 71 003-06    | handle   | 1.00          | 10            |
| 8   | 09 14 40 002 90    | seal     | 1.00          | 2             |
| 10  | 90 17 09 051 00 90 | diverter | 1.00          | 2             |
| 5   | 09 27 97 013-06    | rosette  | 1.00          | 10            |
| 6   | 09 14 10 030 90    | seal     | 1.00          | 2             |