

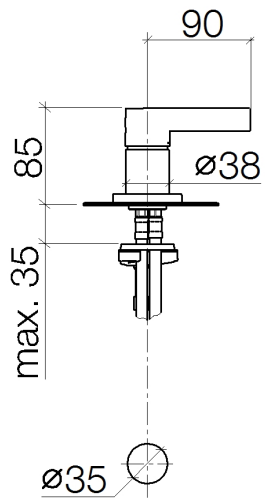
Single-lever basin mixer - Chrome

SERIES-VARIOUS

29 210 971 Product version up to 4/29/2021



- hole diameter 35 mm
- rosette Ø 60 mm
- 3x screw-in M 10 x 1 pressure hose, leak-tested



Flow rate chart



Codes & Standards

DIN 4109

Executive Order
no. 1007

ISO 3822

Ü-Zeichen



Single-lever basin mixer - Chrome

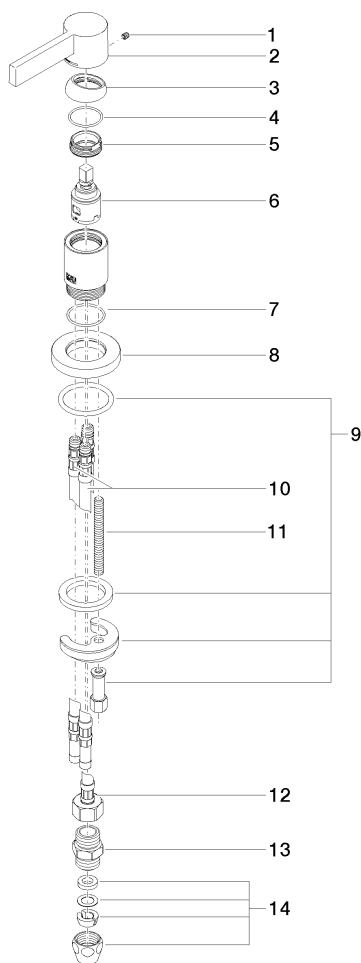
SERIES-VARIOUS

29 210 971 Product version up to 4/29/2021

Certificates and sustainability

LGA_28

GDV_0400



Spare parts list

| No. | Item Number | Name | Quantity used | Delivery time |
|-----|--------------------|--------------------|---------------|---------------|
| 2 | 09 20 87 004-00 | handle | 1.00 | 10 |
| 12 | 04 30 04 019 00 90 | hose | 1.00 | 2 |
| 3 | 09 28 30 026-00 | cover | 1.00 | 10 |
| 8 | 09 27 97 040-00 | rosette | 1.00 | 10 |
| 5 | 09 24 04 266 90 | nut | 1.00 | 2 |
| 4 | 09 14 10 091 90 | seal | 1.00 | 2 |
| 10 | 04 30 04 016 00 90 | hose | 2.00 | 60 |
| 7 | 09 14 10 110 90 | seal | 1.00 | 2 |
| 11 | 09 31 11 011 90 | pin | 1.00 | 2 |
| 9 | 04 30 11 085 97 90 | fixing set | 1.00 | 2 |
| 6 | 90 15 05 042 00 90 | cartridge | 1.00 | 2 |
| 1 | 90 31 11 030 00 90 | pin | 1.00 | 2 |
| 14 | 90 23 30 040 00-00 | threaded connector | 2.00 | 10 |
| 13 | 90 24 03 168 00 90 | nipple | 1.00 | 2 |