

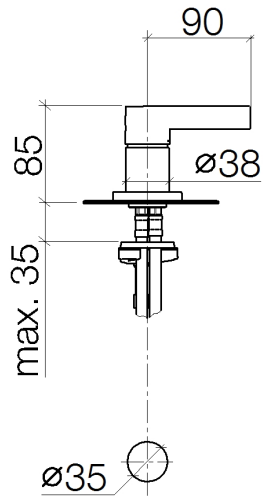
Single-lever basin mixer - Brushed Platinum

SERIES-VARIOUS

29 210 971 Product version up to 4/29/2021



- hole diameter 35 mm
- rosette Ø 60 mm
- 3x screw-in M 10 x 1 pressure hose, leak-tested



Flow rate chart



Codes & Standards

DIN 4109

Executive Order
no. 1007

ISO 3822

Ü-Zeichen



Single-lever basin mixer - Brushed Platinum

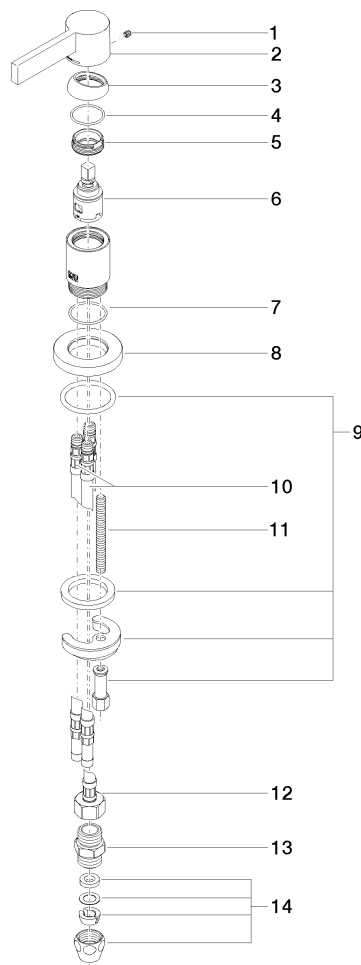
SERIES-VARIOUS

29 210 971 Product version up to 4/29/2021

Certificates and sustainability

LGA_28

GDV_0400



Spare parts list

No.	Item Number	Name	Quantity used	Delivery time
	12 04 30 04 019 00 90	hose	1.00	2
	10 04 30 04 016 00 90	hose	2.00	60
	2 09 20 87 004-06	handle	1.00	10
	5 09 24 04 266 90	nut	1.00	2
	7 09 14 10 110 90	seal	1.00	2
	11 09 31 11 011 90	pin	1.00	2
	3 09 28 30 026-06	cover	1.00	10
	8 09 27 97 040-06	rosette	1.00	10
	6 90 15 05 042 00 90	cartridge	1.00	2
	4 09 14 10 091 90	seal	1.00	2
	9 04 30 11 085 97 90	fixing set	1.00	2
	1 90 31 11 030 00 90	pin	1.00	2
	14 90 23 30 040 00-06	threaded connector	2.00	10
	13 90 24 03 168 00 90	nipple	1.00	2