

## IMO Single-lever basin mixer with high spout without pop-up waste - Brushed Platinum

---

IMO

33 526 670 Product version from 4/1/2014

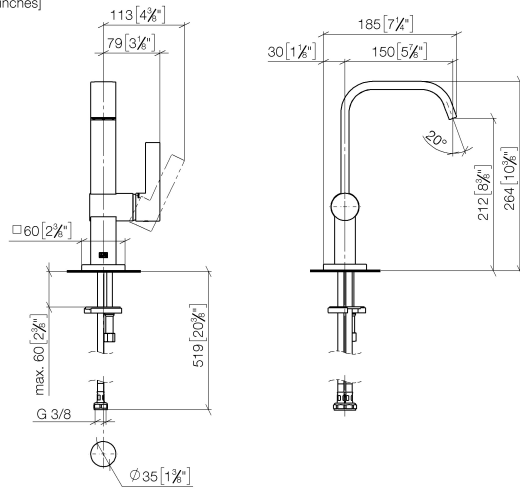


- 150mm projection
- fixed spout
- rectangular, air-enriched flow
- height of mixer 265 mm
- height up to aerator 212 mm
- hole diameter 35 mm
- rosette 60 x 60 mm
- 2x screw-in M 8 x 1 pressure hose, leak-tested
- max. flow 5.7 l/min
- lead-free
- WRAS
- This product can help a building meet the requirements of Green Building Rating Systems, e.g. LEED®, BREEAM®, DGNB

# IMO Single-lever basin mixer with high spout without pop-up waste - Brushed Platinum

IMO

33 526 670 Product version from 4/1/2014  
mm [inches]



Flow rate chart



## Codes & Standards

DIN 4109

Executive Order  
no. 1007

ISO 3822

Scottish Water  
Byelaws

UK Water Supply  
Regulations

Ü-Zeichen



IMO Single-lever basin mixer with high spout without pop-up waste - Brushed  
Platinum

IMO

33 526 670    Product version from 4/1/2014

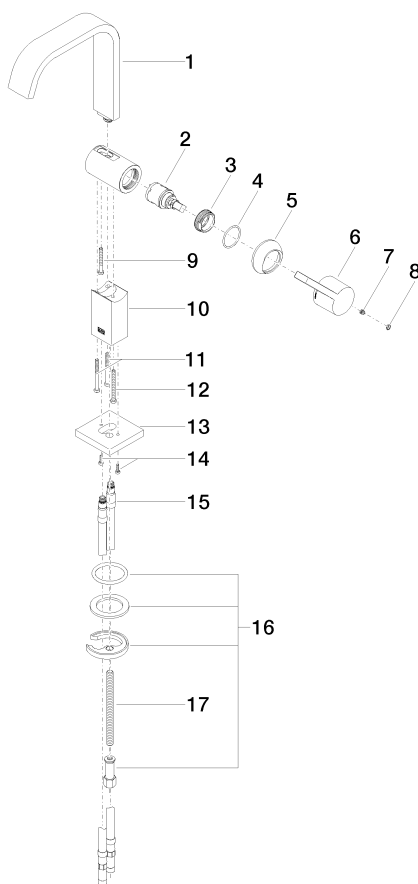
Certificates and sustainability

WRAS_2212	LGA_28	GDV_0400
-----------	--------	----------

# IMO Single-lever basin mixer with high spout without pop-up waste - Brushed Platinum

IMO

33 526 670 Product version from 4/1/2014



## Spare parts list

No.	Item Number	Name	Quantity used	Delivery time
15	04 30 04 098 00 90	hose	2.00	60
17	09 31 11 012 90	pin	1.00	2
10	09 19 67 001-06	casing	1.00	10
1	90 28 22 266 00-06	spout	1.00	10
3	09 24 04 266 90	nut	1.00	2
14	09 30 30 167 90	screw	2.00	2
2	90 15 05 042 00 90	cartridge	1.00	2
5	09 28 30 019-06	cover	1.00	10
6	09 20 67 010-06	handle	1.00	10
12	09 30 30 092 90	screw	1.00	2
16	04 30 11 038 75 90	fixing set	1.00	2
4	09 14 10 120 90	seal	1.00	2
9	09 30 30 097 90	screw	1.00	2
8	90 31 20 087 00-06	plug	1.00	10
11	09 30 30 086 90	screw	2.00	2
13	09 27 67 013-06	rosette	1.00	10
7	90 31 11 030 00 90	pin	1.00	2