

MEM Single-lever mixer - Platinum

MEM

33 800 682    Product version from 3/1/2023




- 201mm projection
- pivotable spout 360°
- Optional swivel limiter available with swivel limiter set 12 820 970 90
- air-enriched flow
- max. flow 6.3 l/min at 3 bar flow pressure
- lead-free
- This product can help a building meet the requirements of Green Building Rating Systems, e.g. LEED®, BREEAM®, DGNB
- WRAS

	Platinum	33 800 682-08
	Chrome	33 800 682-00
	Brushed Platinum	33 800 682-06
	Durabrand (23kt Gold)	33 800 682-09
	Dark Chrome	33 800 682-19
	Brushed Durabrand (23kt Gold)	33 800 682-28
	Matte Black	33 800 682-33
	Brushed Bronze	33 800 682-42
	Brushed Champagne (22kt Gold)	33 800 682-46
	Champagne (22kt Gold)	33 800 682-47
	Brushed Chrome	33 800 682-93
	Brushed Dark Platinum	33 800 682-99


Recommended miscellaneous

	<b>Swivel limitation set -</b>	12 820 970 90
-------------------------------------------------------------------------------------	--------------------------------	---------------

Recommended miscellaneous

	<b>Strainer waste with control handle - Platinum</b>	10 712 970-08
-------------------------------------------------------------------------------------	------------------------------------------------------	---------------

Recommended miscellaneous

	<b>Dispenser without rosette - Platinum</b>	82 424 970-08
-------------------------------------------------------------------------------------	---------------------------------------------	---------------





## MEM Single-lever mixer - Platinum

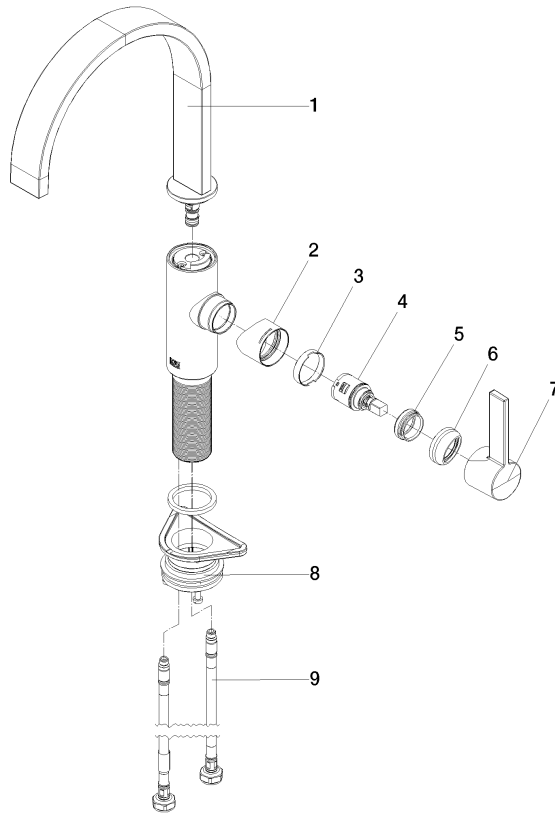
MEM

33 800 682 Product version from 3/1/2023

Certificates and sustainability

LGA\_38

WRAS\_240202



## Spare parts list

No.	Item Number	Name	Quantity used	Delivery time
7	90 20 86 004 00-08	handle	1.00	40
2	09 19 86 012-08	cover	1.00	60
1	90 28 22 332 00-08	spout	1.00	40
5	09 24 04 266 90	nut	1.00	2
9	04 30 04 101 00 90	hose	2.00	2
6	90 28 30 052 00-08	cover	1.00	40
8	04 23 10 044 08 90	fixing set	1.00	2
4	90 15 05 042 00 90	cartridge	1.00	2
3	90 23 10 128 00 90	nut	1.00	2