

ENO Single-lever mixer - Brushed Platinum


ENO

33 800 760
Product version up to 5/15/2020




- 220mm projection
- pivotable spout 130°
- air-enriched flow
- height of mixer 167 mm
- height up to aerator 145 mm
- hole diameter 35 mm
- max. flow 8 l/min at 3 bar flow pressure
- lead-free
- This product can help a building meet the requirements of Green Building Rating Systems, e.g. LEED®, BREEAM®, DGNB
- WRAS

Recommended miscellaneous

| <div>  </div> | <div> <b>Dispenser without rosette -<br/>Brushed Platinum</b> </div> |
|--|--|
|  | 82 424 970-06  |

Recommended miscellaneous

| <div>  </div> | <div> <b>Strainer waste with control handle<br/>- Brushed Platinum</b> </div> |
|--|---|
|  | 10 712 970-06   |





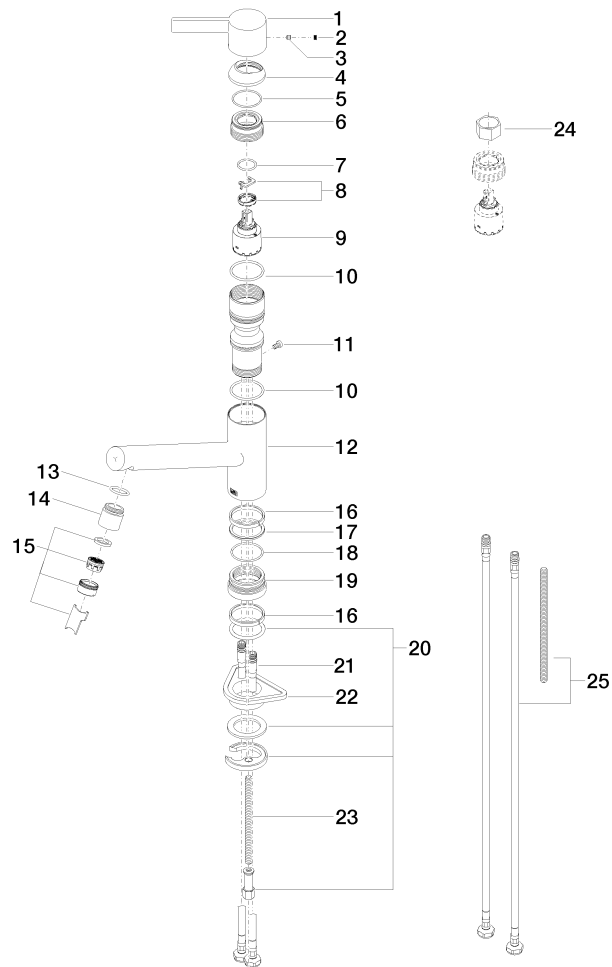
ENO Single-lever mixer - Brushed Platinum

ENO

33 800 760 Product version up to 5/15/2020

Certificates and sustainability

|        |          |        |
|--------|----------|--------|
| ETA_20 | GDV_0400 | LGA_19 |
|--------|----------|--------|





## ENO Single-lever mixer - Brushed Platinum

ENO

33 800 760 Product version up to 5/15/2020

### Spare parts list

| No. | Item Number        | Name        | Quantity used | Delivery time |
|-----|--------------------|-------------|---------------|---------------|
| 9   | 90 15 05 064 00 90 | cartridge   | 1.00          | 2             |
| 5   | 09 14 10 102 90    | seal        | 1.00          | 2             |
| 17  | 09 28 10 144 90    | ring        | 1.00          | 2             |
| 12  | 09 19 76 002-06    | sleeve      | 1.00          | 10            |
| 11  | 09 30 30 112 90    | screw       | 1.00          | 2             |
| 25  | 12 803 970 90      | extension   | 1.00          | 60            |
| 16  | 09 14 15 029 90    | ring        | 2.00          | 2             |
| 1   | 09 20 76 001-06    | handle      | 1.00          | 10            |
| 7   | 09 14 10 031 90    | seal        | 1.00          | 2             |
| 23  | 09 31 11 091 90    | pin         | 1.00          | 2             |
| 18  | 09 14 10 034 90    | seal        | 1.00          | 2             |
| 19  | 09 27 76 001-06    | rosette     | 1.00          | 10            |
| 10  | 09 14 10 038 90    | seal        | 1.00          | 2             |
| 20  | 04 30 11 038 75 90 | fixing set  | 1.00          | 2             |
| 4   | 09 28 30 012-06    | cover       | 1.00          | 10            |
| 14  | 09 24 04 164 10-06 | nipple      | 1.00          | 10            |
| 6   | 09 24 04 270 90    | nut         | 1.00          | 2             |
| 13  | 09 14 10 100 90    | seal        | 1.00          | 2             |
| 21  | 04 30 04 104 00 90 | hose        | 2.00          | 2             |
| 22  | 09 18 40 090 90    | sleeve      | 1.00          | 2             |
| 15  | 90 23 01 026 07-06 | aerator     | 1.00          | 10            |
| 24  | 90 30 09 031 00 90 | key         | 1.00          | 2             |
| 2   | 90 31 20 109 00 90 | plug        | 1.00          | 2             |
| 3   | 90 31 11 030 00 90 | pin         | 1.00          | 2             |
| 8   | 90 28 10 148 00 90 | accessories | 1.00          | 2             |