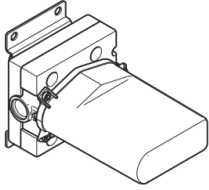


35 691 970 90

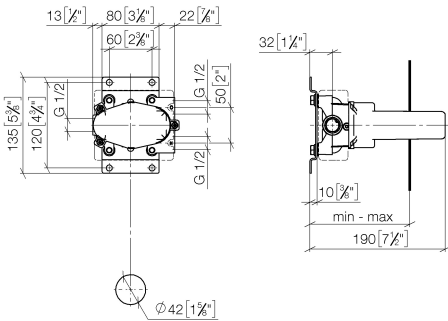


- red brass, lead-free
- 2x female thread 1/2" connections
- 1x female thread 1/2" outlet
- dust cover
- 2x anti-water packing
- soundproofing
- gauge 60 mm
- suitable for xGRID (when using installation track + 12 mm recess depth)
- WRAS

Only for use with basin spouts or hand shower

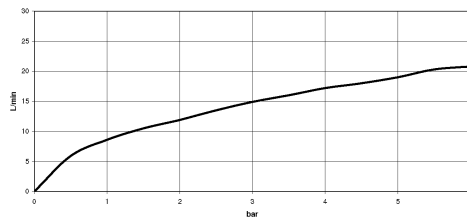
35 691 970 90

mm [inches]



	min	max
Symetrics	103 [4"]	172 [6 3/4"]

Flow rate chart



Codes & Standards

DIN 4109	EN 200	ISO 3822	Scottish Water Byelaws
UK Water Supply Regulations	Ü-Zeichen	VA-Zeichen	XP P 41-280



xGATE Concealed mixer valve with volume control -

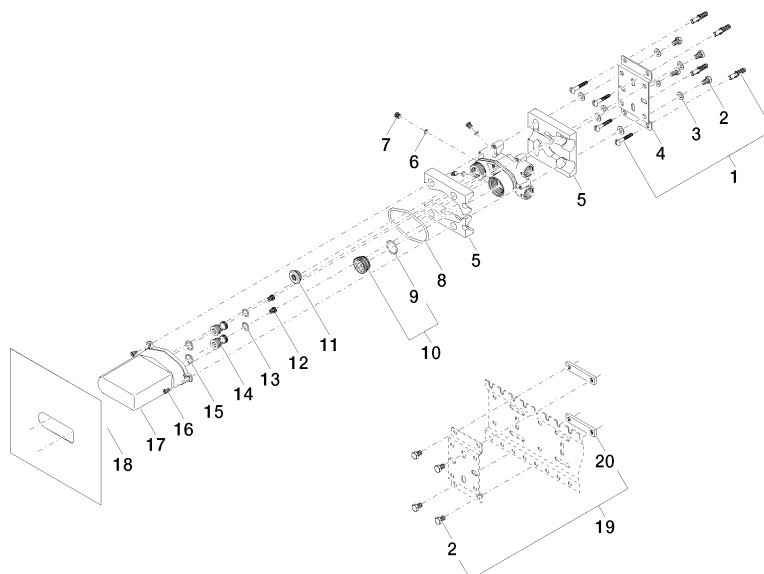
SERIES-VARIOUS

35 691 970 90

Certificates and sustainability

ETA_20	ACS_21 ACC LY	LGA_18	WRAS_2106
--------	---------------	--------	-----------

35 691 970 90



Spare parts list

No.	Item Number	Name	Quantity used	Delivery time
	17 09 21 02 135 90	cap	1.00	2
	8 09 14 10 068 90	seal	1.00	2
	19 04 17 20 100 00 90	fixing set	1.00	2
	5 09 11 11 033 90	accessories	1.00	60
	11 04 31 20 006 00 90	plug	1.00	2
	18 04 14 03 114 00 90	gasket kit	1.00	2
	14 09 24 04 224 10 90	nipple	2.00	2
	9 09 14 10 112 90	seal	1.00	2
	2 09 30 30 152 90	screw	8.00	2
	16 09 30 30 112 90	screw	3.00	2
	1 04 30 31 024 01 90	fixing set	2.00	2
	10 04 30 11 149 00 90	plug	1.00	2
	12 09 23 01 131 90	back-flow preventer	2.00	2
	3 09 30 11 139 90	disc	8.00	2
	4 09 17 20 094 90	holder	1.00	2
	7 09 31 20 027 10-00	plug	3.00	10
	20 09 17 20 100 90	holder	1.00	60
	6 09 14 10 132 90	seal	3.00	2
	13 90 14 10 077 00 90	seal	2.00	2
	15 90 14 10 055 00 90	seal	2.00	2