

Concealed single-lever mixer with integrated shower connection - Platinum

SERIES-VARIOUS

36 050 970

Product version from 10/1/2023



- without rosette
 - WRAS

Intrinsic protection against back flow.

Intrinsic protection against back flow.

	Platinum	36 050 970-08
	Chrome	36 050 970-00
	Brushed Platinum	36 050 970-06
	Dark Brass matt	36 050 970-16
	Dark Chrome	36 050 970-19
	Light Gold	36 050 970-26
	Brushed Light Gold	36 050 970-27
	Brushed Durabrass (23kt Gold)	36 050 970-28
	Matte Black	36 050 970-33
	Brushed Bronze	36 050 970-42
	Brushed Champagne (22kt Gold)	36 050 970-46
	Champagne (22kt Gold)	36 050 970-47
	Brushed Chrome	36 050 970-93
	Brushed Dark Platinum	36 050 970-99

Required miscellaneous

- Concealed wall mounting -

- max. recess depth 105 mm
 - min. recess depth 80 mm

35 050 970 90



36 050 970 Product version from 10/1/2023

mm [inches]



Flow rate chart



Codes & Standards

DIN 4109	EN 1717	ISO 3822	Scottish Water Byelaws
UK Water Supply Regulations	Ü-Zeichen		



Concealed single-lever mixer with integrated shower connection - Platinum

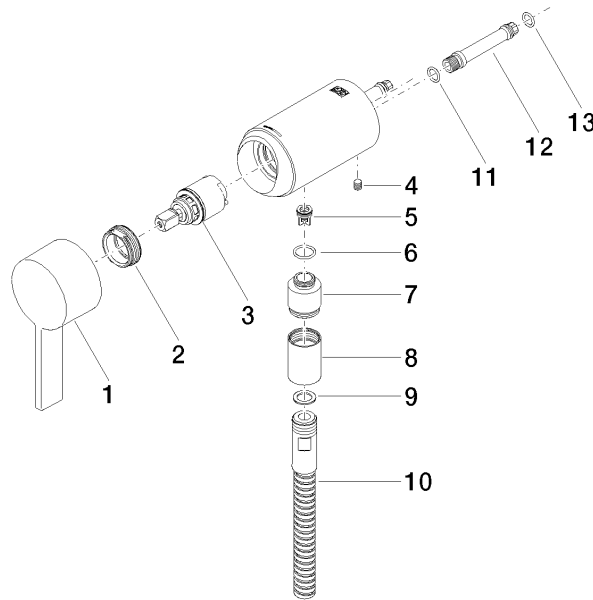
SERIES-VARIOUS

36 050 970 Product version from 10/1/2023

Certificates and sustainability

Belgaqua_21-025-2 WRAS_2011

LGA_29



Spare parts list

No.	Item Number	Name	Quantity used	Delivery time
4	09 31 11 004 90	pin	1.00	60
13	09 14 10 061 90	seal	1.00	2
12	09 18 40 230 90	connection	1.00	2
5	09 23 01 131 90	back-flow preventer	1.00	2
6	09 14 10 213 90	seal	1.00	2
10	28 322 970-08	Metal shower hose 1/2" x 3/8" x 1750 mm - Platinum	1.00	40
7	09 24 03 281-08	nipple	1.00	40
2	09 24 04 266 90	nut	1.00	2
1	90 20 97 064 00-08	handle	1.00	40
9	90 14 20 026 00 90	seal	1.00	2
8	90 21 02 069 00-08	cover	1.00	40
11	90 14 10 060 00 90	seal	1.00	2
3	90 15 05 044 04 90	cartridge	1.00	2