
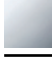




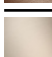




36 060 809

- cover plate 80 x 80 mm



| | | |
|--|--------------------------------|---------------|
|  | Champagne (22kt Gold) | 36 060 809-47 |
|  | Chrome | 36 060 809-00 |
|  | Brushed Platinum | 36 060 809-06 |
|  | Platinum | 36 060 809-08 |
|  | Dark Chrome | 36 060 809-19 |
|  | Brushed Durabronze (23kt Gold) | 36 060 809-28 |
|  | Brushed Bronze | 36 060 809-42 |
|  | Brushed Champagne (22kt Gold) | 36 060 809-46 |
|  | Brushed Dark Platinum | 36 060 809-99 |

Required miscellaneous



Concealed wall-mounted single-lever mixer - 35 860 970 90

- max. recess depth 95 mm
- min. recess depth 80 mm



VAIA Concealed single-lever mixer with cover plate - Champagne (22kt Gold)

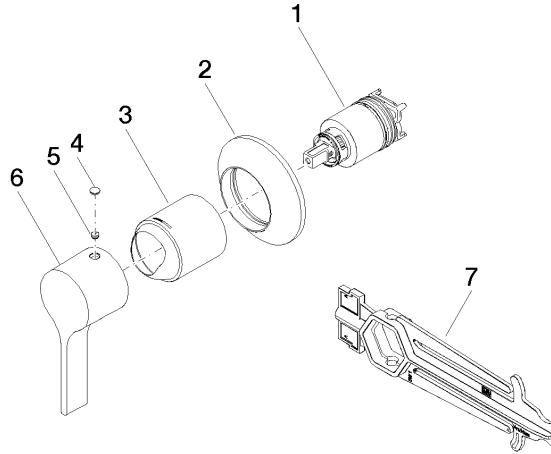
VAIA

36 060 809

Certificates

LGA_29905.

36 060 809



Spare parts list

| No. | Item Number | Name | Quantity used | Delivery time |
|-----|--------------------|-----------|---------------|---------------|
| 1 | 90 15 05 064 01 90 | cartridge | 1 | 2 |
| 2 | 90 27 80 032 00-47 | rosette | 1 | 30 |
| 3 | 09 11 02 293-47 | cover | 1 | 30 |
| 4 | 90 31 20 087 00-47 | plug | 1 | 30 |
| 5 | 90 31 11 063 00 90 | pin | 1 | 2 |
| 6 | 09 20 80 021-47 | handle | 1 | 30 |
| 7 | 90 30 09 064 00 90 | key | 1 | 2 |