

Concealed single-lever mixer with diverter - Brushed Platinum

SERIES SPECIFIC

36 120 660 Product version up to 2/20/2020



- automatic diverter
- cover plate Ø 150 mm
- WRAS

| | | |
|---|-------------------------------------|---------------|
|  | Brushed Platinum | 36 120 660-06 |
|  | Chrome | 36 120 660-00 |
|  | Platinum | 36 120 660-08 |
|  | Dark Chrome | 36 120 660-19 |
|  | Light Gold | 36 120 660-26 |
|  | Brushed Light Gold | 36 120 660-27 |
|  | Brushed Durabronze (23kt Gold) | 36 120 660-28 |
|  | Matte Black | 36 120 660-33 |
|  | Brushed Dark Brass | 36 120 660-39 |
|  | Brushed Bronze | 36 120 660-42 |
|  | Brushed Champagne (22kt Gold) | 36 120 660-46 |
|  | Champagne (22kt Gold) | 36 120 660-47 |
|  | Brushed Chrome | 36 120 660-93 |
|  | Brushed Dark Platinum | 36 120 660-99 |

Required miscellaneous



- Concealed single-lever mixer -** 35 020 970 90
- max. recess depth 105 mm
 - min. recess depth 80 mm

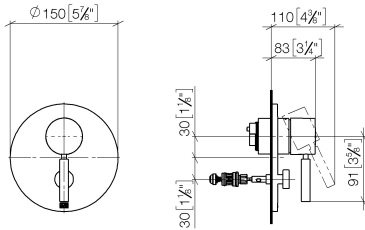
Required miscellaneous



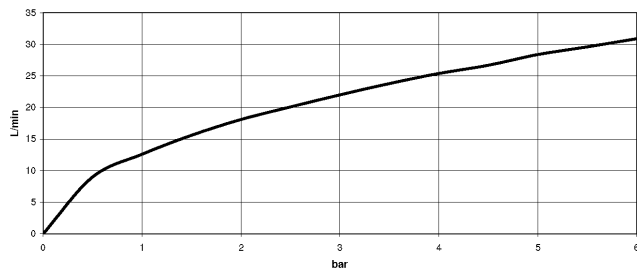
- Concealed single-lever mixer with backflow preventor -** 35 021 970 90
- max. recess depth 105 mm
 - min. recess depth 80 mm

36 120 660 Product version up to 2/20/2020

mm [inches]



Flow rate chart



Codes & Standards

DIN 4109

EN 817

ISO 3822

Scottish Water
Byelaws

UK Water Supply
Regulations

Ü-Zeichen



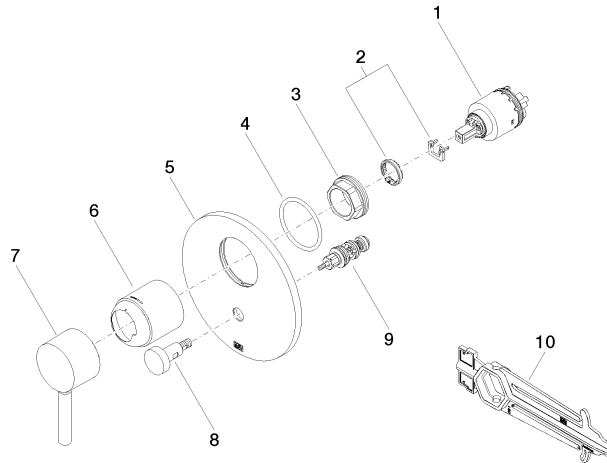
Concealed single-lever mixer with diverter - Brushed Platinum

SERIES SPECIFIC

36 120 660 Product version up to 2/20/2020

Certificates and sustainability

| | | |
|---------------------|--------|-----------|
| DVGW_DW- 6512DN0 | LGA_19 | WRAS_2207 |
|---------------------|--------|-----------|



Spare parts list

| No. | Item Number | Name | Quantity used | Delivery time |
|-----|--------------------|-------------|---------------|---------------|
| 2 | 04 28 10 149 00 90 | accessories | 1.00 | 2 |
| 1 | 90 15 05 038 00 90 | cartridge | 1.00 | 60 |
| 5 | 09 11 02 261-06 | plate | 1.00 | 10 |
| 6 | 09 11 02 260-06 | sleeve | 1.00 | 10 |
| 9 | 90 21 34 081 00 90 | diverter | 1.00 | 2 |
| 4 | 09 14 10 084 90 | seal | 1.00 | 2 |
| 3 | 09 24 04 448 90 | nut | 1.00 | 2 |
| 8 | 90 31 09 139 00-06 | pull-rod | 1.00 | 10 |
| 7 | 90 20 66 004 00-06 | handle | 1.00 | 10 |
| 10 | 90 30 09 064 00 90 | key | 1.00 | 2 |