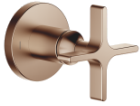


36 200 809



- rotary diverter
- rosette Ø 60 mm
- WRAS 2307045

	Brushed Bronze	36 200 809-42
	Chrome	36 200 809-00
	Brushed Platinum	36 200 809-06
	Dark Chrome	36 200 809-19
	Brushed Durabrass (23kt Gold)	36 200 809-28
	Brushed Champagne (22kt Gold)	36 200 809-46
	Champagne (22kt Gold)	36 200 809-47
	Brushed Dark Platinum	36 200 809-99

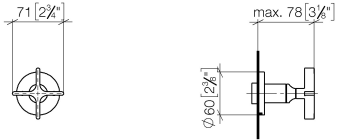
Required miscellaneous



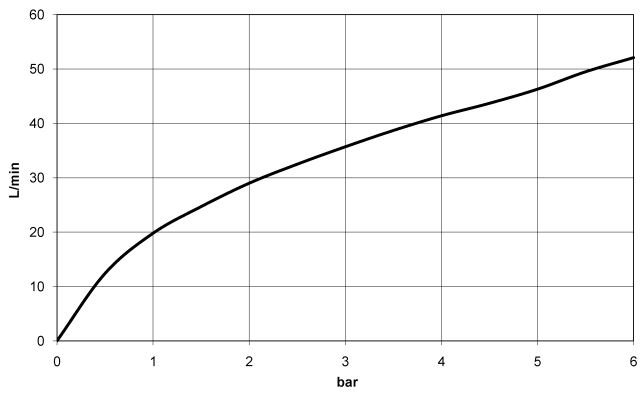
- Concealed two-way diverter -** 35 202 970 90
- min. recess depth 85 mm
 - max. recess depth 160 mm

36 200 809

mm [inches]



Flow rate chart

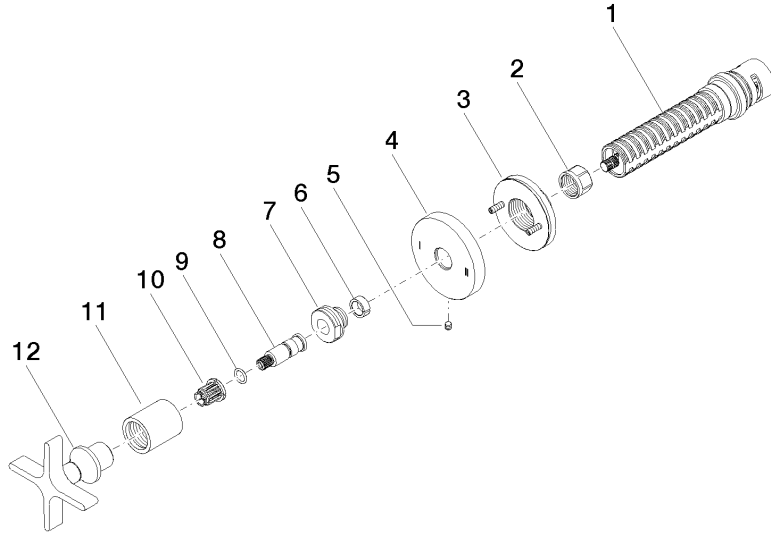


Certificates

LGA_38379.

WRAS_2307045.

36 200 809



Spare parts list

No.	Item Number	Name	Quantity used	Delivery time
1	90 90 03 304 10 90	diverter	1	2
2	90 23 30 023 00 90	nut	1	2
3	90 21 02 181 00 90	disc	1	2
4	09 27 89 118-42	rosette	1	30
5	09 31 11 294 90	pin	1	2
6	90 14 15 020 03 90	ring	1	2
7	09 24 05 002 90	nipple	1	2
8	09 29 06 022 90	spindle	1	2
9	90 14 10 060 00 90	seal	1	2
10	90 12 12 002 00 90	fixing cap	1	2
11	09 21 02 070-42	cover	1	60
12	90 20 80 014 01-42	handle	1	30