

36 200 819



- rotary diverter
- rosette Ø 60 mm
- WRAS 2307045

	Brushed Champagne (22kt Gold)	36 200 819-46
	Chrome	36 200 819-00
	Brushed Platinum	36 200 819-06
	Dark Chrome	36 200 819-19
	Brushed Durabronze (23kt Gold)	36 200 819-28
	Brushed Bronze	36 200 819-42
	Champagne (22kt Gold)	36 200 819-47
	Brushed Dark Platinum	36 200 819-99

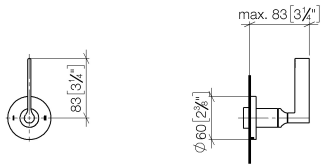
Required miscellaneous



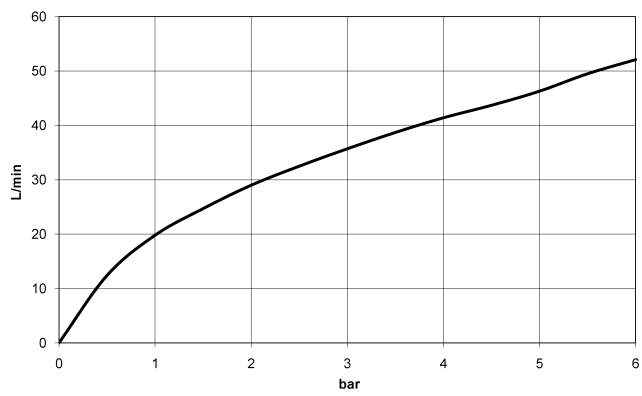
- Concealed two-way diverter -** 35 202 970 90
- max. recess depth 160 mm
 - min. recess depth 85 mm

36 200 819

mm [inches]



Flow rate chart

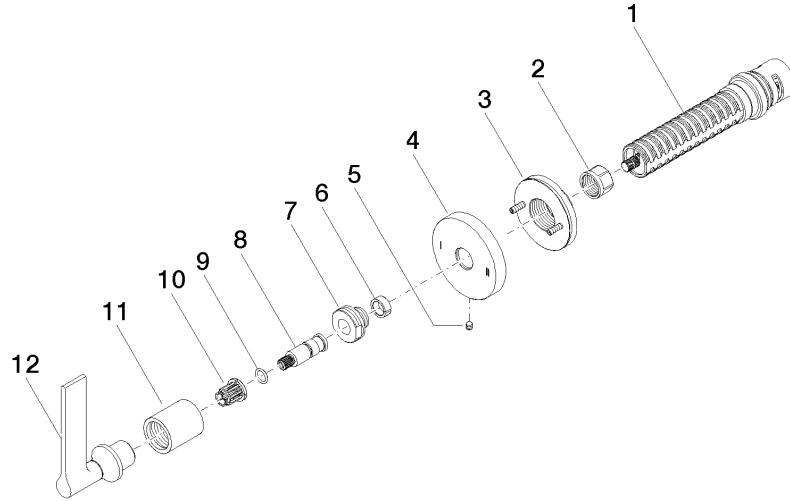


Certificates

LGA_38379.

WRAS_2307045.

36 200 819



Spare parts list

No.	Item Number	Name	Quantity used	Delivery time
1	90 90 03 304 10 90	diverter	1	2
2	90 23 30 023 00 90	nut	1	2
3	90 21 02 181 00 90	disc	1	2
4	09 27 89 118-46	rosette	1	30
5	09 31 11 294 90	pin	1	2
6	90 14 15 020 03 90	ring	1	2
7	09 24 05 002 90	nipple	1	2
8	09 29 06 022 90	spindle	1	2
9	90 14 10 060 00 90	seal	1	2
10	90 12 12 002 00 90	fixing cap	1	2
11	09 21 02 070-46	cover	1	30
12	90 20 80 015 01-46	handle	1	30