

TARA Concealed two-way diverter - Platinum

TARA

36 200 892



- rotary diverter
- rosette 60 mm
- WRAS 2307045

| | | |
|--|-------------------------------------|---------------|
|  | Platinum | 36 200 892-08 |
|  | Chrome | 36 200 892-00 |
|  | Brushed Platinum | 36 200 892-06 |
|  | Dark Chrome | 36 200 892-19 |
|  | Brushed Durabronze (23kt Gold) | 36 200 892-28 |
|  | Matte Black | 36 200 892-33 |
|  | Brushed Bronze | 36 200 892-42 |
|  | Brushed Champagne (22kt Gold) | 36 200 892-46 |
|  | Champagne (22kt Gold) | 36 200 892-47 |
|  | Brushed Chrome | 36 200 892-93 |
|  | Brushed Dark Platinum | 36 200 892-99 |

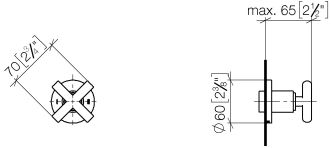
Required miscellaneous



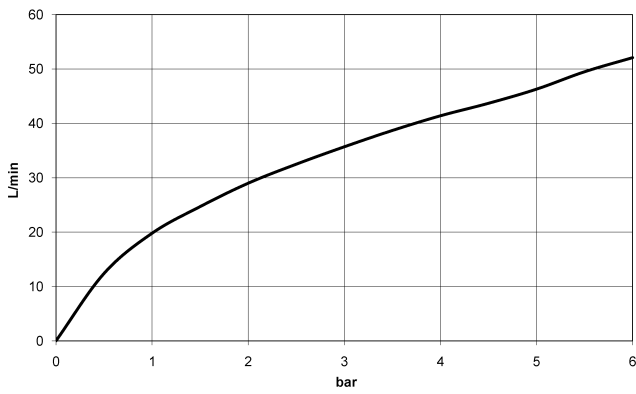
- Concealed two-way diverter -** 35 202 970 90
- max. recess depth 160 mm
 - min. recess depth 85 mm

36 200 892

mm [inches]



Flow rate chart



Codes & Standards

DIN 4109

ISO 3822

Scottish Water
Byelaws

UK Water Supply
Regulations

Ü-Zeichen



TARA Concealed two-way diverter - Platinum

TARA

36 200 892

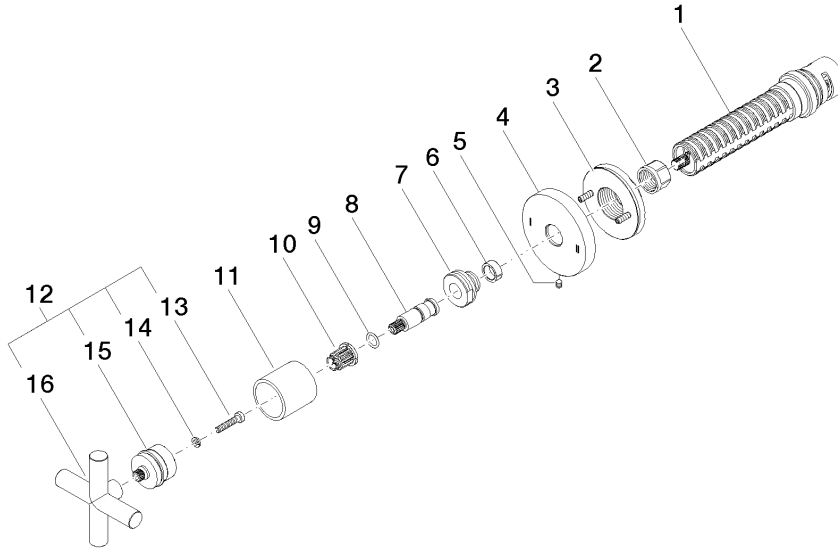
Certificates

WRAS_2307

LGA_38

36 200 892

Product version from 4/1/2022





TARA Concealed two-way diverter - Platinum

TARA

36 200 892

Spare parts list

Product version from 4/1/2022

| No. | Item Number | Name | Quantity used | Delivery time |
|-----|--------------------|----------|---------------|---------------|
| | 90 90 03 304 10 90 | diverter | 16 | 2 |