


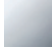


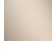

**CL.1 Concealed two-way diverter - Brushed Dark Platinum**

CL.1

36 201 705

- rotary diverter
- rosette 60 x 60 mm



|   |                               |               |
|---|-------------------------------|---------------|
|  | Brushed Dark Platinum         | 36 201 705-99 |
|  | Chrome                        | 36 201 705-00 |
|  | Brushed Platinum              | 36 201 705-06 |
|  | Dark Chrome                   | 36 201 705-19 |
|  | Brushed Champagne (22kt Gold) | 36 201 705-46 |
|  | Champagne (22kt Gold)         | 36 201 705-47 |

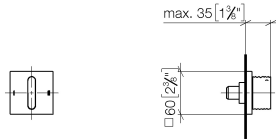
**Required miscellaneous**



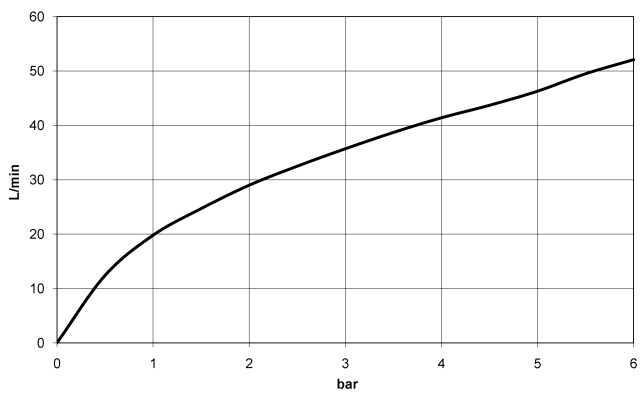
- Concealed two-way diverter -** 35 202 970 90
- max. recess depth 160 mm
  - min. recess depth 115 mm

36 201 705

mm [inches]



### Flow rate chart

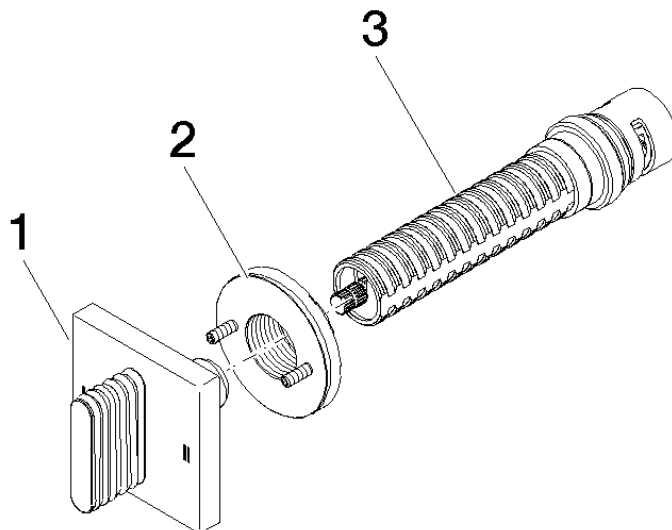


### Certificates

LGA\_38379.

WRAS\_2307045.

36 201 705



### Spare parts list

| No. | Item Number        | Name     | Quantity used | Delivery time |
|-----|--------------------|----------|---------------|---------------|
| 1   | 90 20 70 055 08-99 | handle   | 1             | 30            |
| 2   | 90 21 02 181 00 90 | disc     | 1             | 2             |
| 3   | 90 90 03 304 10 90 | diverter | 1             | 2             |