

## xTOOL Concealed thermostat without volume control 3/4" - Chrome

SERIES SPECIFIC

36 503 780 Product version up to 1/1/2022



- cover plate 120 x 120 mm
- temperature control handle with safety limit stop at 38°C
- thermostat cartridge
- WRAS

|   |                                |               |
|---|--------------------------------|---------------|
|    | Chrome                         | 36 503 780-00 |
|    | Brushed Platinum               | 36 503 780-06 |
|    | Platinum                       | 36 503 780-08 |
|    | Dark Chrome                    | 36 503 780-19 |
|    | Brushed Light Gold             | 36 503 780-27 |
|    | Brushed Durabronze (23kt Gold) | 36 503 780-28 |
|    | Matte Black                    | 36 503 780-33 |
|    | Brushed Champagne (22kt Gold)  | 36 503 780-46 |
|    | Champagne (22kt Gold)          | 36 503 780-47 |
|   | Brushed Chrome                 | 36 503 780-93 |
|  | Brushed Dark Platinum          | 36 503 780-99 |

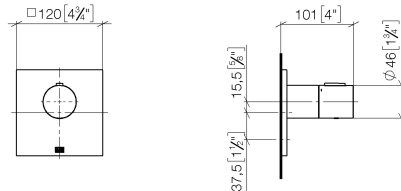
### Required miscellaneous



- xTOOL Concealed thermostat module without volume control -** 35 503 970 90
- max. recess depth 155 mm
  - min. recess depth 115 mm

36 503 780 Product version up to 1/1/2022

mm [inches]



### Flow rate chart



### Codes & Standards

DIN 4109

EN 1111

ISO 3822

Scottish Water  
Byelaws

UK Water Supply  
Regulations

Ü-Zeichen



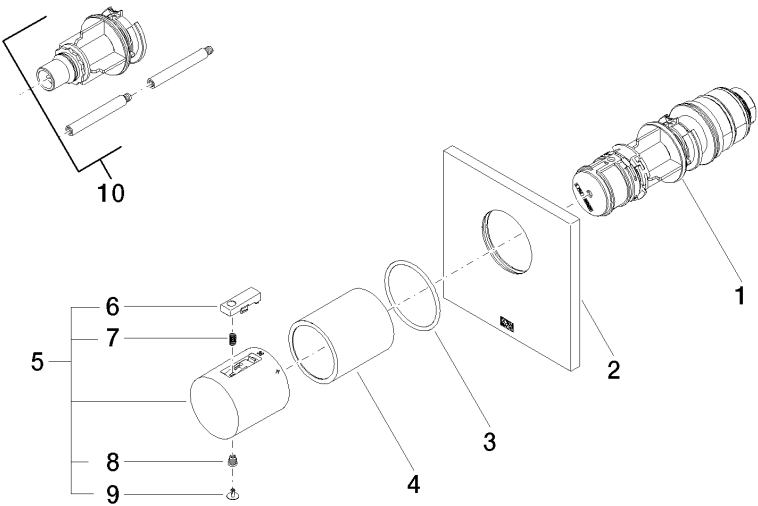
xTOOL Concealed thermostat without volume control 3/4" - Chrome

SERIES SPECIFIC

36 503 780    Product version up to 1/1/2022

Certificates and sustainability

|           |                     |        |        |
|-----------|---------------------|--------|--------|
| WRAS_2011 | DVGW_DW-<br>6512DN0 | LGA_29 | LGA_29 |
|-----------|---------------------|--------|--------|



Spare parts list

| No. | Item Number          | Name              | Quantity used | Delivery time |
|-----|----------------------|-------------------|---------------|---------------|
|     | 2 09 11 02 196-00    | cover             | 1.00          | 60            |
|     | 10 12 178 970 90     | Extension 46 mm - | 1.00          | 2             |
|     | 7 90 16 02 027 00 90 | spring            | 1.00          | 2             |
|     | 5 90 17 33 004 00-00 | handle            | 1.00          | 10            |
|     | 9 90 31 20 049 00-00 | plug              | 1.00          | 10            |
|     | 8 90 30 30 136 00 90 | screw             | 1.00          | 2             |
|     | 4 90 21 02 112 00-00 | sleeve            | 1.00          | 10            |
|     | 3 90 14 10 049 00 90 | seal              | 1.00          | 2             |
|     | 6 90 21 33 011 00-13 | handle            | 1.00          | 2             |
|     | 1 90 15 02 063 00 90 | cartridge         | 1.00          | 2             |