


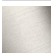
LULU Wall valve clockwise closing 1/2" - Chrome

LULU


36 607 710



- rosette 78 x 55 mm
- head part with cut-to-length spindle and sleeve
- WRAS

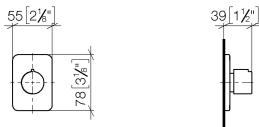
	Chrome	36 607 710-00
	Brushed Platinum	36 607 710-06

Required miscellaneous

	<div> <div>Wall valve 1/2" -</div> <div> <div>•max. recess depth 145 mm</div> <div>•min. recess depth 75 mm</div> </div> </div>	35 607 970 90
---	---	---------------

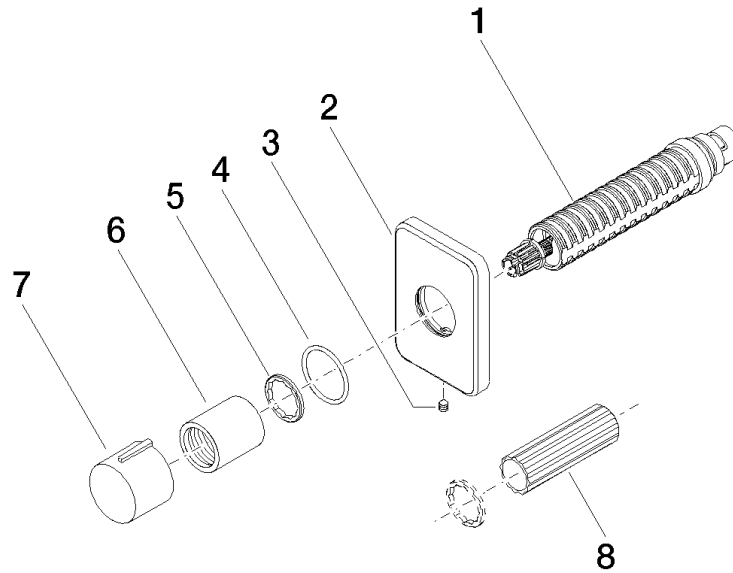
36 607 710

mm [inches]



Codes & Standards			
ASME A112.18.1	cUPC	DIN 4109	EN 1111
EN 200	ISO 3822	Scottish Water Byelaws	UK Water Supply Regulations
Ü-Zeichen			

Certificates and sustainability				
DVGW_DW-6501DN0	WRAS_2011	LGA_29	WRAS_2010	DVGW_DW-6512DN0
LGA_29	IAPMO_4976 (



Spare parts list

No.	Item Number	Name	Quantity used	Delivery time
2	09 27 71 029-00	rosette	1.00	10
6	09 21 02 070-00	cover	1.00	10
1	90 90 03 143 00 90	top	1.00	2
5	09 16 01 025 90	ring	1.00	2
7	09 20 97 030-00	handle	1.00	10
3	90 31 11 007 00 90	pin	1.00	2
8	90 30 09 010 00 90	key	1.00	2
4	90 14 10 063 00 90	seal	1.00	2